

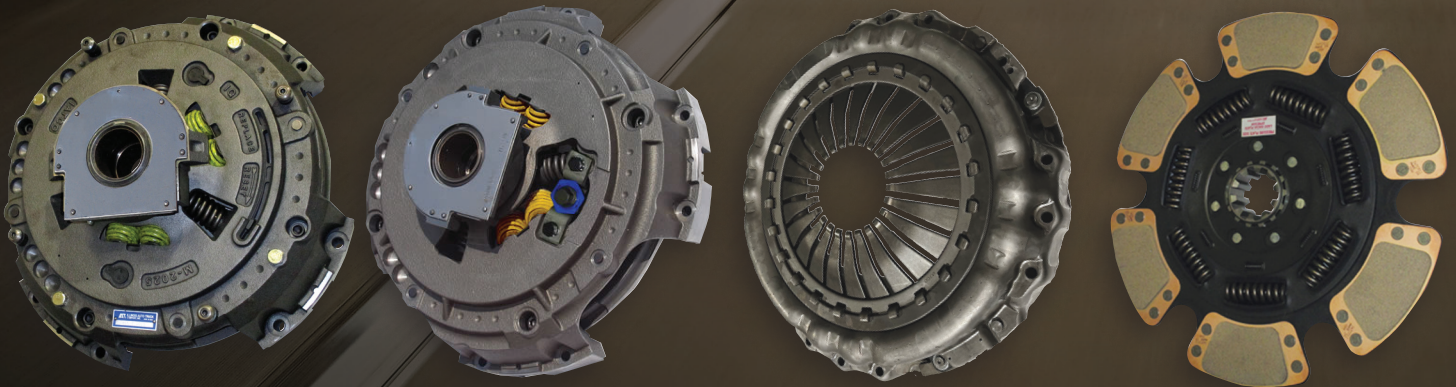


NEW CLUTCH ASSEMBLIES, SUPPLEMENTAL CLUTCH PARTS, FLYWHEELS & REPLACEMENT CLUTCH COMPONENTS



The most complete line of NEW clutch assemblies, components,
flywheels and supplemental parts for class 6, 7 & 8 vehicles

O.E.M. Quality | 100% New Components



1.800.842.1712 | 1.847.299.1100
sales@iatcoinc.com
www.iatcoinc.com

Quality Products Manufactured
in the United States of America





Where modern innovation meets four generations of old-fashioned service and value...

With a reputation for quality since 1939, *Illinois Auto Truck Co., Inc.*'s commitment to excellence has enhanced our standing as the best in the industry.

As *Illinois Auto Truck Co., Inc.* has grown through the years, so has the culture of quality and innovation built into our products that has made our growth possible. The Illinois Auto Truck family is a unique blend of individuals working as a team to bring you the finest service and products at the most competitive prices in our industry. From being the first independent company in the United States to manufacture replacement truck clutch components, to our evolution into a world-class company enjoying global sales, we have come a long way indeed.

At *Illinois Auto Truck Co., Inc.* our single, ongoing mission is to be the preferred provider of medium and heavy duty replacement clutch components and clutch assemblies. Throughout the world we are truly the **"Best in the Clutch"**.



1669 Marshall Drive
Des Plaines, Illinois 60018-1840 USA

Phone: 1.847.299.1100
Toll-Free: 1.800.842.1712

Facsimile: 847.299.1205
Toll-Free Fax: 800.942.7660
Email: sales@iatcoinc.com

Website: www.iatcoinc.com
Online Catalog: catalog.iatco.com



EXTENDED CLUTCH WARRANTY: 3

CLUTCH ASSEMBLIES: *Heavy Duty & Medium Duty* 4-10

- AMT – Detroit DT12..... 5
- AMT – MaxShift Clutch®..... 6
- AMT – Volvo I-Shift / MACK MDrive..... 6
- AutoSet Clutch®..... 4
- EASY EFFORT®..... 5
- Pull-Type *Angle Spring*®..... 7
- Pull-Type Stamped Steel..... 8
- Push & Pull Type..... 9-10

CLUTCH APPLICATIONS: *Medium Duty* 11-13

- Chevrolet & GMC..... 11
- Dodge..... 11
- Ford..... 12
- Freightliner..... 12
- Hino..... 12
- International Truck (Navistar)..... 13
- Isuzu..... 13
- Kenworth..... 13
- Mack-Midliner..... 13
- Peterbilt..... 13
- Sterling..... 13

CLUTCH TOOLS & PARTS: 14-20

- Adjustment Mechanisms..... 16
- AMT Clutch Actuators & Solenoid Vave..... 17
- Anti-Rattle Springs..... 16
- Application Specific Products..... 17
- Bell Housing Kits & Hoses..... 16
- Clutch Alignment Tools & Drive Lug..... 17
- Clutch Brake Washers..... 15
- Clutch Brakes – Standard, Hinged, & Torque Limiting..... 15
- Clutch Components..... 20-21
- Clutch Installation Kits..... 14
- Clutch Jack & Transmission Jack..... 18
- Clutch Tools – Adjusting, Self-Adjusting Reset, & Gauges..... 16
- Drive Lugs and Nuts..... 16
- Flywheels..... 14
- Flywheel Grinders..... 18
- Forks, Cross Shafts, & Bushings..... 17
- MaxShift Clutch® Clutch Brake..... 15
- Pilot Bearings..... 16
- Sleeve & Bearing Assemblies..... 16

QUICK REFERENCE: 19

TECHNICAL INFORMATION: 22-23

- Clutch Envelope..... 22
- Clutch System Settings..... 22
- Flywheels Clearance..... 22
- Quick Troubleshooting Guide..... 23

Illinois Auto Truck Co., Inc. recommends whenever possible to use the VIN (Vehicle Identification Number) of the truck to determine the manufacturer's clutch assembly part number of the original clutch assembly that the vehicle had when it left the factory. Using the manufacturer's clutch assembly part number to match up a replacement clutch will help ensure that a correct replacement clutch assembly is selected. If you do not see a manufacturer's part number listed in our catalog or the truck in question has an engine that was related to put out more torque than stock, please call us to help ensure a correct replacement clutch assembly is selected.

This marketing material may not be reproduced in whole or part in any form or by any means, electronic or mechanical, including photocopy, recording, or by an information storage and retrieval system now known or hereafter invented, without prior permission from Illinois Auto Truck Co., Inc. For permission to reprint, call 800.842.1712.

Angle Spring® is a Registered Trademark of Eaton Corporation. *AutoSet Clutch*® and *EASY EFFORT*® are Registered Trademarks of *Illinois Auto Truck Co., Inc.*

EXTENDED CLUTCH WARRANTY

Receive a 3-Year, Unlimited Mile Warranty when you purchase an IATCO Easy Effort® or AutoSet Clutch® along with an IATCO Clutch Installation Kit

Applicable only to our Easy Effort® and AutoSet Clutches.®

All Clutch Installation Kits are eligible.

Must provide proof of purchase of a new or ground flywheel.

Valid only within USA & Canada for purchases made after January 1, 2019.

For more information contact our Customer Service Department **847-299-1100** or email at **sales@iatcoinc.com**



3-Year, Unlimited Mile Warranty

Easy Effort® & AutoSet Clutch® are registered trademarks of Illinois Auto Truck Co., Inc.

AutoSet Clutch® – U.S. Patent No. 10,094,429

CLUTCH ASSEMBLIES

Self-Adjusting – **AutoSet Clutch®**

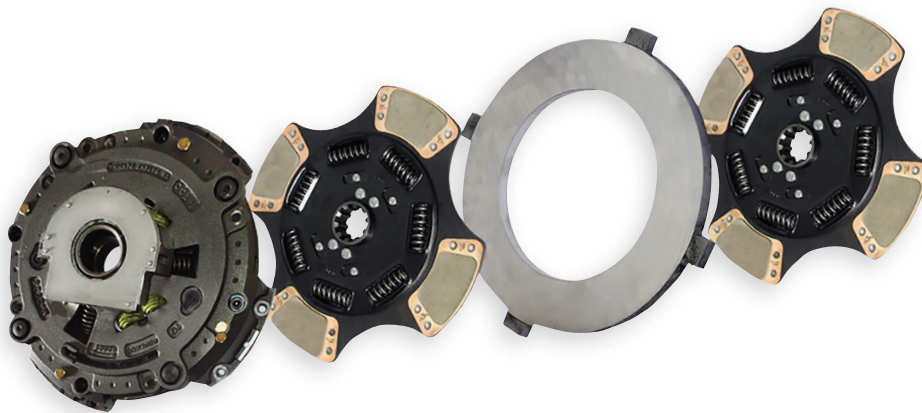


Receive a 3-year, Unlimited Mile Warranty when you purchase an *AutoSet Clutch®* along with an IATCO clutch installation kit, see page 20 for further details.

The patented *AutoSet Clutch®* by Illinois Auto Truck Co., Inc. improves on all previously available versions of self-adjusting Heavy Duty clutches. With every push of the clutch pedal, clutches and the associated parts wear over time. IATCO's *AutoSet Clutch®* compensates for wear by auto-adjusting to maintain the clutch pedal freeplay (1/2" distance between the release bearing and the clutch brake).

As an increase in wear occurs the release bearing moves closer to the clutch brake. The *AutoSet Clutch®* incorporates two shifting cams that sense the time to adjust to maintain proper clearance. The external indicator tab provides a visual inspection of the remaining available clutch life. The *AutoSet Clutch®* sets itself upon installation and eliminates necessary manual adjustments throughout the life of the clutch. The *AutoSet Clutch®* is the perfect solution to decrease clutch maintenance costs and maximize vehicle operation time.

US Patent No. 10,094,429



IAT ILLINOIS AUTO TRUCK
CO., INC.



Celebrating
80+
years
since 1939

IATCO Part Number	O.E.M. Reference	Cover Assembly Number	Adjustment Type	Bearing Type	Plate Load, lb	Torque Rating (lb-ft)	Carrier Style	Friction Material	No. of Springs	Rear Disc Front Disc	Flywheel Opening
-------------------	------------------	-----------------------	-----------------	--------------	----------------	-----------------------	---------------	-------------------	----------------	----------------------	------------------

15 1/2" x 2" AutoSet Clutch®

NMU701-044-1	209701-80	NCA-209701-1	Auto-Adjust	Triple-Zerk	3200	1450	4-Paddle	Ceramic	7	(2) M-1489	10"
NMU701-064-4	209701-74	NCA-209701-4	Auto-Adjust	Triple-Zerk	3600	1650	4-Paddle	Ceramic	10	M-1128 M-1129	8.5"
NMU701-044-4	309701-82	NCA-209701-4	Auto-Adjust	Triple-Zerk	3600	1700	4-Paddle	Ceramic	7	(2) M-1489	10"
NMU701-304-4	309701-24 309701-34	NCA-209701-4	Auto-Adjust	Triple-Zerk	3600	1750	4-Paddle	Ceramic	7 (Pre-Damper)	M-2156 M-2157	10"
NMU701-054-4-M (MACK Only)	309701-51	NCA-209701-4	Auto-Adjust	Triple-Zerk	3600	1760	4-Paddle	Ceramic	9	M-1197 M-1198	10"
NMU701-057-4-M (MACK Only)	309701-91	NCA-209701-4	Auto-Adjust	Triple-Zerk	3600	1760	6-Paddle	Ceramic	9	M-1586 M-1587	10"
NMU701-067-6	209391-93	NCA-209701-6	Auto-Adjust	Triple-Zerk	4000	1810	6-Paddle	Ceramic	10	M-1590 M-1591	8.5"
NMU701-057-6-M (MACK Only)	309701-98	NCA-209701-6	Auto-Adjust	Triple-Zerk	4000	1850	6-Paddle	Ceramic	9	M-1586 M-1587	10"
NMU701-207-6	309701-20	NCA-209701-6	Auto-Adjust	Triple-Zerk	4000	1860	6-Paddle	Ceramic	7	(2) M-1960	10"
NMU701-317-6	309701-25	NCA-209701-6	Auto-Adjust	Triple-Zerk	4000	2050	6-Paddle	Ceramic	7 (Pre-Damper)	M-2144 M-2145	10"

15 1/2" x 2" AutoSet Clutch® Torque Performance (includes Spline Saver)

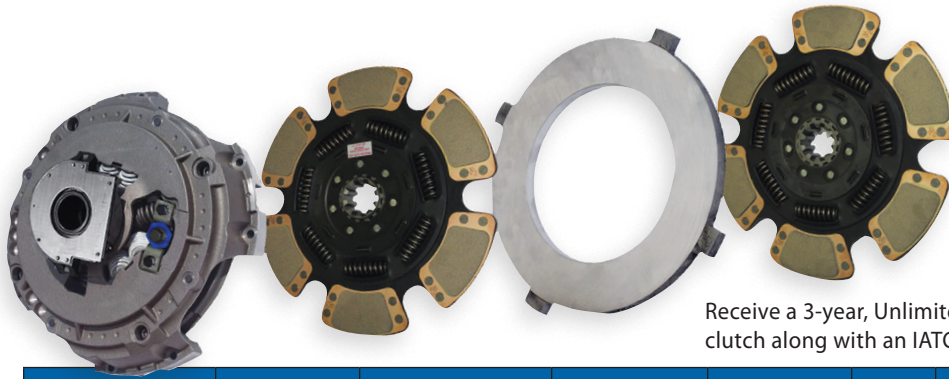
NMU701-147-6	309701-25	NCA-209701-6	Auto-Adjust	Triple-Zerk	4000	2050	6-Paddle	Ceramic	6	(2) M-1614	10"
NMU701-157-8*	309708-32	NCA-209701-8	Auto-Adjust	Triple-Zerk	4200	2250	6-Paddle	Ceramic	6	(2) M-1614	10"

* NMU701-157-8 is used with a 14 spline input shaft

AutoSet Clutch® is a Registered Trademark of Illinois Auto Truck Co., Inc.

CLUTCH ASSEMBLIES

Heavy Duty – **EASY EFFORT®**



EASY EFFORT® clutches follow the latest production advancements incorporating coil spring technology. Three assist springs serve to lower bearing load, and therefore, reduce pedal effort. Adjustment is achieved through the reliable *Spring-A-Just* system.

Receive a 3-year, Unlimited Mile Warranty when you purchase an **EASY EFFORT®** clutch along with an IATCO clutch installation kit, see page 3 for further details.

IATCO Part Number	O.E.M. Reference	Cover Assembly Number	Adjustment Type	Bearing Type	Plate Load, lb	Torque Rating (lb-ft)	Carrier Style	Friction Material	No. of Springs	Rear Disc Front Disc	Flywheel Opening
-------------------	------------------	-----------------------	-----------------	--------------	----------------	-----------------------	---------------	-------------------	----------------	----------------------	------------------

14" x 1 3/4" EASY EFFORT®

NMU800-020-4	108035-82	NCA-147800-4	Spring-A-Just	Single-Zerk	3600	1100	Round	Organic	8	M-0534 M-0535	7"
NMU800-084-1	108063-59	NCA-147800-1	Spring-A-Just	Single-Zerk	3200	1150	4-Paddle	Ceramic	8	M-1077 M-1078	7"

14" x 2" EASY EFFORT®

NMU890-020-4	108034-82	NCA-147890-4	Spring-A-Just	Single-Zerk	3600	1100	Round	Organic	8	M-0554 M-0555	7"
NMU890-023-1	108034-61	NCA-147890-1	Spring-A-Just	Single-Zerk	3200	1150	3-Paddle	Ceramic	8	M-0974 M-0975	7"
NMU890-184-1	108050-59	NCA-147890-1	Spring-A-Just	Single-Zerk	3200	1400	4-Paddle	Ceramic	8	M-1625 M-1626	7"
NMU890-184-1-M (MACK Only)	108950-59	NCA-147890-1-M	Spring-A-Just	Dual-Zerk	3200	1400	4-Paddle	Ceramic	8	M-1625 M-1626	7"

15 1/2" x 1 3/4" EASY EFFORT®

NMU477-020-4	108390-77	NCA-157477-4	Spring-A-Just	Triple-Zerk	3600	1250	Round	Organic	8	M-0574 M-0575	7"
--------------	-----------	--------------	---------------	-------------	------	------	-------	---------	---	------------------	----

15 1/2" x 2" EASY EFFORT®

NMU898-090-4	108391-77	NCA-158898-4	Spring-A-Just	Triple-Zerk	3600	1250	Round	Organic	8	M-1629 M-1630	7"
NMU898-090-6	108391-82	NCA-158898-6	Spring-A-Just	Triple-Zerk	4000	1350	Round	Organic	8	M-1629 M-1630	7"
NMU898-060-6	108391-78	NCA-158898-6	Spring-A-Just	Triple-Zerk	4000	1400	Round	Organic	10	M-1120 M-1121	8.5"
NMU898-094-4	108391-81	NCA-157898-4	Spring-A-Just	Triple-Zerk	3600	1450	4-Paddle	Ceramic	8	M-1637 M-1638	7"
NMU898-064-4	208925-74	NCA-157898-4	Spring-A-Just	Triple-Zerk	3600	1650	4-Paddle	Ceramic	10	M-1128 M-1129	8.5"
NMU898-044-4	308925-82	NCA-157898-4	Spring-A-Just	Triple-Zerk	3600	1700	4-Paddle	Ceramic	7	(2) M-1489	10"
NMU898-304-4	308925-24 308925-34	NCA-157898-4	Spring-A-Just	Triple-Zerk	3600	1750	4-Paddle	Ceramic	7 (Pre-Damper)	M-2156 M-2157	10"
NMU898-054-4-M (MACK Only)	308925-51	NCA-157898-4-M	Spring-A-Just	Triple-Zerk	3600	1760	4-Paddle	Ceramic	9	M-1197 M-1198	10"
NMU898-057-4-M (MACK Only)	308925-91	NCA-157898-4-M	Spring-A-Just	Triple-Zerk	3600	1760	6-Paddle	Ceramic	9	M-1586 M-1587	10"
NMU898-067-6	108391-93	NCA-157898-6	Spring-A-Just	Triple-Zerk	4000	1810	6-Paddle	Ceramic	10	M-1590 M-1591	8.5"
NMU898-057-6-M (MACK Only)	308925-98	NCA-157898-6-M	Spring-A-Just	Triple-Zerk	4000	1850	6-Paddle	Ceramic	9	M-1586 M-1587	10"
NMU898-207-6	308925-20	NCA-157898-6	Spring-A-Just	Triple-Zerk	4000	1860	6-Paddle	Ceramic	7	(2) M-1960	10"
NMU898-317-6	308925-25	NCA-157898-6	Spring-A-Just	Triple-Zerk	4000	2050	6-Paddle	Ceramic	7 (Pre-Damper)	M-2144 M-2145	10"
NMU898-067-8	N/A	NCA-157898-8	Spring-A-Just	Triple-Zerk	4200	2050	6-Paddle	Ceramic	10	M-1590 M-1591	8.5"

15 1/2" X 2" EASY EFFORT® Torque Performance (includes Spline Saver)

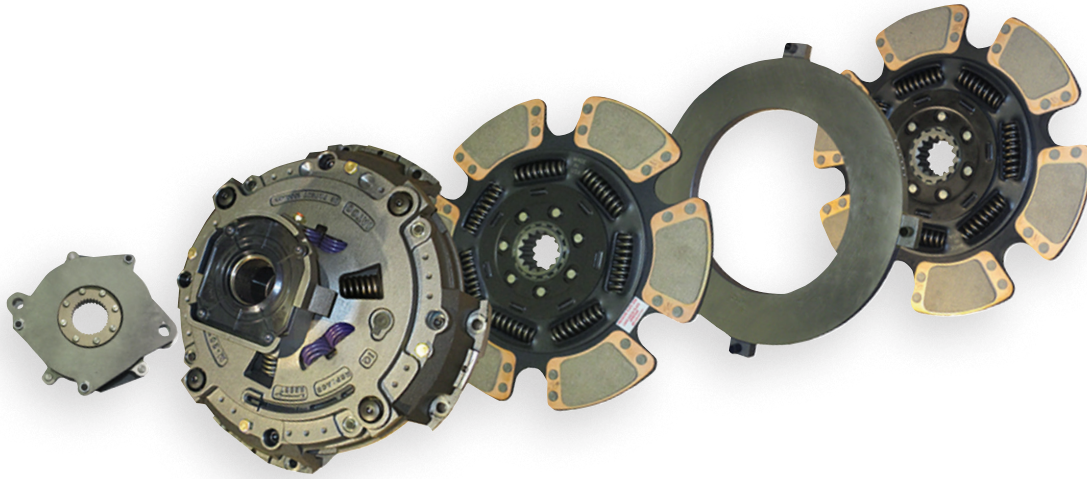
NMU898-147-6	308925-25	NCA-157898-6	Spring-A-Just	Triple-Zerk	4000	2050	6-Paddle	Ceramic	6	(2) M-1614	10"
NMU898-147-8	EA60289	NCA-157898-8	Spring-A-Just	Triple-Zerk	4200	2250-2400	6-Paddle	Ceramic	6	(2) M-1614	10"
NMU898-157-8*	308937-32	NCA-157898-8	Spring-A-Just	Triple-Zerk	4200	2250	6-Paddle	Ceramic	6	(2) M-1614	10"
NMU898-147-9	N/A	NCA-157898-9	Spring-A-Just	Triple-Zerk	4800	3000	6-Paddle	Ceramic	6	(2) M-1614	10"
NMU898-157-9*	N/A	NCA-157898-9	Spring-A-Just	Triple-Zerk	4800	3000	6-Paddle	Ceramic	6	(2) M-1614	10"

* NMU898-157-8 and NMU898-157-9 are used with a 14 spline input shaft

EASY EFFORT® is a Registered Trademark of Illinois Auto Truck Co., Inc.

CLUTCH ASSEMBLIES

Heavy Duty – **AMT**



AMT – MaxShift CLUTCH®

IATCO Part Number	O.E.M. Reference	Spline	Plate Load, lb.	Torque Rating (lb-ft)	No. of Springs	Application	Clutch Brake (included)	Clutch Installation Kit (not included)	Alignment Tool (not included)
-------------------	------------------	--------	-----------------	-----------------------	----------------	-------------	-------------------------	--	-------------------------------

15 1/2" MaxShift Clutch®

NMU702-347-8-AF	122002-35A	14	4200	1850	7 (Pre-Damper)	UltraShift® & UltraShift Plus®	M-2174	M-2110 (replaces K-4145)	T-107
NMU702-337-8-AF	122003-42A			2250					

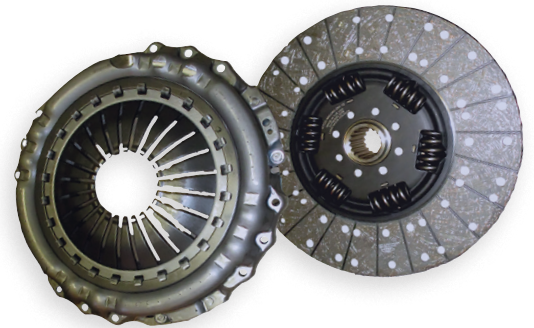
UltraShift® & UltraShift Plus® are registered trademarks of Eaton Corporation

AMT – DETROIT DT12

IATCO Part Number	O.E.M. Reference	Spline	Torque Rating (lb-ft)	Friction Material	No. of Springs	Clutch Actuator (not included)	Alignment Tool (not included)
-------------------	------------------	--------	-----------------------	-------------------	----------------	--------------------------------	-------------------------------

430MM X 50MM STAMPED STEEL SINGLE PLATE

NMU360-280-12	A02-82500-001, A02-14027-008, A02-14135-000, K-4489CL	18-Involute	1850	Organic	6	A-1002	M-2195
NMU361-280-12	A02-14108-001, A02-14108-002	18-Involute	1850	Organic	5	A-1002	M-2195

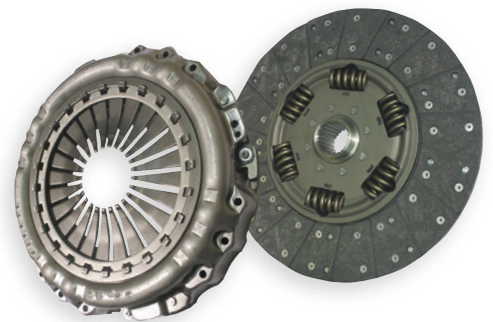


AMT – VOLVO I-SHIFT / MACK MDRIVE

IATCO Part Number	O.E.M. Reference	Spline	Torque Rating (lb-ft)	Friction Material	No. of Springs	Application	Alignment Tool (not included)	Clutch Actuator (not included)	Solenoid Valve (not included)
-------------------	------------------	--------	-----------------------	-------------------	----------------	-------------	-------------------------------	--------------------------------	-------------------------------

430MM X 50MM STAMPED STEEL SINGLE PLATE

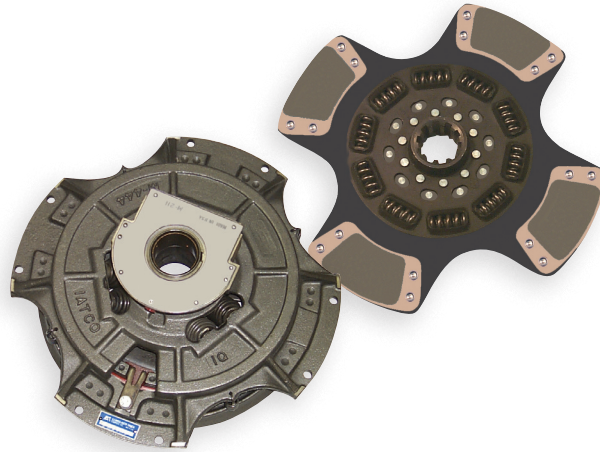
NMU359-280-12	3400 700 359, 104461-1, 85003114, 85000907, 850003972, 85003973, 85002560	24-Involute	1850	Organic	6	A, B, C, D, E Series	M-2188	A-1001	SV-2001
NMU362-250-12	3400 700 601	24-Involute	2360	Organic	5	F Series	M-1288	A-1001	SV-2001



CLUTCH ASSEMBLIES

Heavy Duty – Pull-Type Angle Spring®

Ceramic friction material is used for the heaviest applications. All raw materials and components are of O.E.M. quality. Heavy duty damper springs ensure longer damper life.



IAT ILLINOIS AUTO TRUCK
CO., INC.



Celebrating
80+
years
since 1939

IATCO Part Number	O.E.M. Reference	Cover Assembly Number	Adjustment Type	Bearing Type	Plate Load, lb	Torque Rating (lb-ft)	Carrier Style	Friction Material	No. of Springs	Rear Disc Front Disc	Flywheel Opening
-------------------	------------------	-----------------------	-----------------	--------------	----------------	-----------------------	---------------	-------------------	----------------	----------------------	------------------

14" x 1 3/4" Cast Iron Single and Two Plate

NMU915-020-1	107915-2	NCA-127915-1	Ease-A-Just	Single-Zerk	3200	500	Round	Organic	8	M-0534	7"
NMU915-010-1	107915-1	NCA-127915-1	Ease-A-Just	Single-Zerk	3200	500	Round	Organic	Rig	M-0216	7"
NMU400-020-1	107035-32	NCA-127400-1	Manual	Single-Zerk	3200	1000	Round	Organic	8	M-0534 M-0535	7"
NMU400-084-1	107063-59	NCA-127400-1	Manual	Single-Zerk	3200	1150	4-Paddle	Ceramic	8	M-1077 M-1078	7"

14" x 2" Cast Iron Two Plate

NMU390-020-1	107034-32	NCA-127390-1	Manual	Single-Zerk	3200	1000	Round	Organic	8	M-0554 M-0555	7"
NMU390-020-4	107034-82	NCA-127390-4	Manual	Single-Zerk	3600	1100	Round	Organic	8	M-0554 M-0555	7"
NMU390-024-1	107034-53	NCA-127390-1	Manual	Single-Zerk	3200	1150	4-Paddle	Ceramic	8	M-0958 M-0959	7"
NMU390-184-1	107050-59	NCA-127390-1	Manual	Single-Zerk	3200	1400	4-Paddle	Ceramic	8	M-1625 M-1626	7"
NMU390-184-1-M (MACK Only)	107950-59	NCA-127390-1-M	Manual	Dual-Zerk	3200	1400	4-Paddle	Ceramic	8	M-1625 M-1626	7"

15 1/2" x 1 3/4" Cast Iron Two Plate

NMU476-094-4	107090-55	NCA-127476-4	Manual	Single-Zerk	3600	1400	4-Paddle	Ceramic	8	M-1694 M-1695	7"
--------------	-----------	--------------	--------	-------------	------	------	----------	---------	---	------------------	----

15 1/2" x 2" Cast Iron Two Plate

NMU597-090-4	107091-77	NCA-127597-4	Manual	Single-Zerk	3600	1250	Round	Organic	8	M-1629 M-1630	7"
NMU597-096-4	107091-55	NCA-127597-4	Manual	Single-Zerk	3600	1400	Round	Ceramic	8	M-1633 M-1634	7"
NMU597-094-4	107091-81	NCA-150698-4	Manual	Single-Zerk	3600	1450	4-Paddle	Ceramic	8	M-1637 M-1638	7"
NMU597-064-4	107091-74 107391-74	NCA-150698-4	Manual	Single-Zerk	3600	1650	4-Paddle	Ceramic	10	M-1128 M-1129	8.5"
NMU698-044-4	107925-82	NCA-150698-4	Manual	Single-Zerk	3600	1700	4-Paddle	Ceramic	7	(2) M-1489	10"
NMU698-054-4-M (MACK Only)	107935-51	NCA-150698-4-M	Manual	Dual-Zerk	3600	1700	4-Paddle	Ceramic	9	M-1197 M-1198	10"
NMU698-057-4-M (MACK Only)	107935-91	NCA-150698-4-M	Manual	Dual-Zerk	3600	1700	6-Paddle	Ceramic	9	M-1586 M-1587	10"
NMU597-067-6	107391-93	NCA-150698-6	Manual	Single-Zerk	4000	1810	6-Paddle	Ceramic	10	M-1590 M-1591	8.5"
NMU698-057-6-M (MACK Only)	107935-94	NCA-150698-6-M	Manual	Dual-Zerk	4000	1850	6-Paddle	Ceramic	9	M-1586 M-1587	10"
NMU698-207-6	107925-25	NCA-150698-6	Manual	Single-Zerk	4000	2050	6-Paddle	Ceramic	7	(2) M-1960	10"

Angle Spring® is a Registered Trademark of Eaton Corporation

CLUTCH ASSEMBLIES

Medium Duty – Pull-Type Stamped Steel



NMU060-022-5-A

IAT ILLINOIS AUTO TRUCK
CO., INC.



IATCO Part Number	O.E.M. Reference	Cover Assembly Number	Adjustment Type	Bearing Type	Plate Load, lb	Torque Rating (lb-ft)	Carrier Style	Friction Material	No. of Springs	Rear Disc Front Disc	Flywheel Opening
-------------------	------------------	-----------------------	-----------------	--------------	----------------	-----------------------	---------------	-------------------	----------------	----------------------	------------------

14" x 1 1/2" Stamped Steel Single Plate

NMU710-024-3-J	107688-7	NCA-129710-3-J	Spring-A-Just	Single-Zerk	2500	520	4-Paddle	Ceramic	8	M-1220	7"
----------------	----------	----------------	---------------	-------------	------	-----	----------	---------	---	--------	----

14" x 1 3/4" Stamped Steel Single Plate

NMU059-020-1	107683-16	NCA-129059-1	Manual	Single-Zerk	3200	445	Round	Organic	8	M-0534	7"
NMU747-025-2	107213-5	NCA-127747-2	Manual	Single-Zerk	2800	560	3-Paddle	Ceramic	8	M-1507	7"
NMU059-022-1	107683-5	NCA-129059-1	Spring-A-Just	Single-Zerk	3200	650	3-Paddle	Ceramic	8	M-1507	7"
NMU059-093-1	107684-5	NCA-129059-1	Spring-A-Just	Single-Zerk	3200	650	3-Paddle	Ceramic	8	M-1730	7"
NMU600-024-2*	107401-1	NCA-129060-2	Spring-A-Just	Single-Zerk	2800	560	4-Paddle	Ceramic	8	M-0950	7"
NMU059-024-1	107683-20	NCA-129059-1	Spring-A-Just	Single-Zerk	3200	650	4-Paddle	Ceramic	8	M-0950	7"

*NMU600-024-2 manufactured with short bearing sleeve

Available with Steel Ring Intermediate Assembly (Replace -A with -S)

14" x 1 3/4" Stamped Steel Two Plate**

NMU044-020-2-A	107137-16	NCA-129044-2	Manual	Single-Zerk	2800	800	Round	Organic	8	M-0534 M-0535	7"
NMU060-020-2-A	107237-16	NCA-129060-2	Spring-A-Just	Single-Zerk	2800	800	Round	Organic	8	M-0534 M-0535	7"
NMU044-022-5-A	107137-8	NCA-129044-5	Manual	Single-Zerk	2000	900	3-Paddle	Ceramic	8	M-1507 M-1508	7"
NMU060-022-5-A	107237-10	NCA-129060-5	Spring-A-Just	Single-Zerk	2000	900	3-Paddle	Ceramic	8	M-1507 M-1508	7"
NMU060-024-3-A	107237-24	NCA-129060-3	Spring-A-Just	Single-Zerk	2500	1050	4-Paddle	Ceramic	8	M-0950 M-0951	7"

14" x 2" Stamped Steel Two Plate**

NMU061-092-5-A	107342-11	NCA-129061-5	Spring-A-Just	Single-Zerk	2000	900	3-Paddle	Ceramic	8	M-1678 M-1679	7"
NMU055-025-2-A	107142-2	NCA-129055-2	Manual	Single-Zerk	2800	900	3-Paddle	Ceramic	8	M-1678 M-1679	7"
NMU061-023-3-A	107342-22	NCA-129061-3	Spring-A-Just	Single-Zerk	2500	950	3-Paddle	Ceramic	8	M-0974 M-0975	7"
NMU061-024-3-A	107342-20	NCA-129061-3	Spring-A-Just	Single-Zerk	2500	1050	4-Paddle	Ceramic	8	M-0958 M-0959	7"
NMU061-024-2-A	107508-11	NCA-129061-2	Spring-A-Just	Single-Zerk	2800	1150	4-Paddle	Ceramic	8	M-0958 M-0959	7"

CLUTCH ASSEMBLIES

Medium Duty – Push Type



NMU2076-139



IATCO Part Number	O.E.M. Reference	Cover Assembly Number	Adjustment Type	Plate Load, lb	Torque Rating (lb-ft)	Carrier Style	Friction Material	No. of Springs	Spline Size	Rear Disc Front Disc	Flywheel Opening
-------------------	------------------	-----------------------	-----------------	----------------	-----------------------	---------------	-------------------	----------------	-------------	-------------------------	------------------

310MM x 1³/₈" & 1¹/₂" Single Plate

NMU038-174-3	107943-3	NCA-102038	External	2400	400	4-Paddle	Ceramic	8	1 ³ / ₈	M-1803	
NMU104-194-3	107310-1	NCA-102104	External	2400	400	4-Paddle	Ceramic	8	1 ¹ / ₂	M-1805	
NMU038-194-3	107606-1	NCA-102038	External	2400	400	4-Paddle	Ceramic	8	1 ¹ / ₂	M-1805	

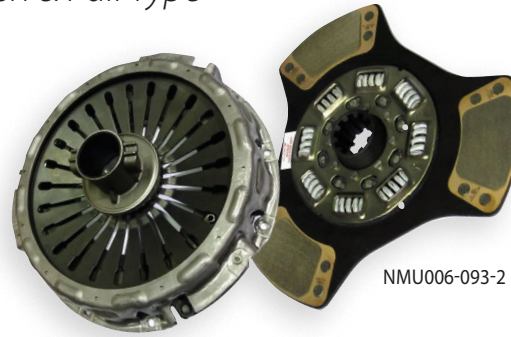
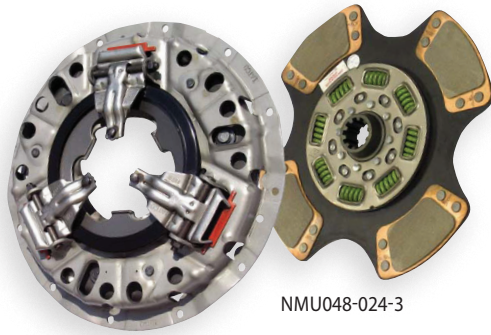
330MM x 1³/₈" & 1¹/₂" Single and Two Plate

NMU1938-124	107611-2	NCA-330-1938	External	2400	400	Round	Organic	8	1 ³ / ₈	M-0929-CV	
NMU1938-127	107943-3	NCA-330-1938	External	2400	400	4-Paddle	Ceramic	8	1 ³ / ₈	M-0938-CV	
NMU1928-137	107606-1	NCA-330-1928	External	2700	400	4-Paddle	Ceramic	8	1 ¹ / ₂	M-0998-CV	
NMU1928-134	107611-1	NCA-330-1928	External	2700	400	Round	Organic	8	1 ¹ / ₂	M-0622-CV	
NMU1940-132	LP1940-132	NCA-330-1940	External	2000	400	Round	Organic	Rigid	1 ¹ / ₂	M-1200 M-1200	
NMU1933-134	LP1933-134	NCA-330-1933	External	2700	450	Round	Organic	8	1 ¹ / ₂	M-0622-CV	
NMU2076-137	LP2076-137	NCA-330-2076	External	2400	500	4-Paddle	Ceramic	8	1 ¹ / ₂	M-0998-CV	
NMU2076-139	LP2076-139	NCA-330-2076	External	2400	500	3-Paddle	Ceramic	8	1 ¹ / ₂	M-1354	
NMU1928-137	LP1928-137	NCA-330-1928	External	2700	520	4-Paddle	Ceramic	8	1 ¹ / ₂	M-0998-CV	7"
NMU1935-136	LP1935-136	NCA-330-1935	External	2700	520	Round	Ceramic	10	1 ¹ / ₂	M-0702-CV	
NMU1938-137	LP1938-137	NCA-330-1938	External	2400	520	4-Paddle	Ceramic	8	1 ¹ / ₂	M-0998-CV	
NMU1940-134	LP1940-134	NCA-330-1940	External	2000	525	Round	Organic	8	1 ¹ / ₂	M-0625-CV M-0626-CV	
NMU1989-134	LP1989-134	NCA-330-1989	External	2000	525	Round	Organic	8	1 ¹ / ₂	M-0625-CV M-0626-CV	7"

For specific release bearing assemblies available per application refer to page 16

CLUTCH ASSEMBLIES

Medium Duty – Push & Pull Type



IAT ILLINOIS AUTO TRUCK
CO., INC.



IATCO Part Number	O.E.M. Reference	Cover Assembly Number	Adjustment Type	Plate Load, lb	Torque Rating (lb-ft)	Carrier Style	Friction Material	No. of Springs	Spline Size	Rear Disc Front Disc	Flywheel Opening
-------------------	------------------	-----------------------	-----------------	----------------	-----------------------	---------------	-------------------	----------------	-------------	----------------------	------------------

14" x 1 1/2" & 1 3/4" Single and Two Plate

NMU1686-134	LP1686-134	NCA-14-1686	External	2300	420	Round	Organic	10	1 1/2	M-0638-CV	
NMU1047-134	LP1047-134	NCA-14-1047	External	3200	500	Round	Organic	10	1 1/2	M-0638-CV	
NMU1686-138	LP1686-138	NCA-14-1686	External	2300	500	4-Paddle	Ceramic	10	1 1/2	M-0884-CV	
NMU1072-134	LP1072-134	NCA-14-1072	External	2000	550	Round	Organic	10	1 1/2	M-0641-CV M-0642-CV	
NMU1067-144	LP1067-144	NCA-14-1067	External	2800	550	Round	Organic	10	1 3/4	M-0647-CV M-0648-CV	
NMU1072-138	LP1072-138	NCA-14-1072	External	2000	700	4-Paddle	Ceramic	10	1 1/2	M-0893-CV M-0894-CV	
NMU1113-144	LP1113-144	NCA-14-1113	External	2400	750	Round	Organic	10	1 3/4	M-0647-CV M-0648-CV	
NMU1113-148	LP1113-148	NCA-14-1113	External	2400	1000	Round	Ceramic	10	1 3/4	M-0715-CV M-0716-CV	
NMU101-024-3	107350-2	NCA-102101	External	2400	500	4-Paddle	Ceramic	8	1 1/2	M-1331	7"
NMU101-023-3	107350-3	NCA-102101	External	2400	500	3-Paddle	Ceramic	8	1 1/2	M-1578	7"
NMU101-024-3-G*	107350-4	NCA-102101	External	2400	500	4-Paddle	Ceramic	8	1 1/2	M-1331	7"
NMU048-024-3	107621-1	NCA-102048	External	2400	500	4-Paddle	Ceramic	8	1 1/2	M-1331	7"
NMU048-024-3-G**	107621-7	NCA-102048	External	2400	500	4-Paddle	Ceramic	8	1 1/2	M-1331	7"
NMU110-024-3	107350-1	NCA-102101	External	2400	500	4-Paddle	Ceramic	8	1 3/4	M-1333	7"
NMU480-024-3	107621-2	NCA-102048	External	2400	500	4-Paddle	Ceramic	8	1 3/4	M-1333	7"

* Includes Sleeve & Bearing Assembly M-1615 (Mack-Midliner)

** Includes Sleeve & Bearing Assembly M-1710 (Freightliner)

362MM x 40MM (18 Spline)

NMU696-240-3-G	K26301-02 636 3027 00	NCA-362696-3	External	2200	520	Round	Organic	4	40MM	M-2060	8.5"
----------------	--------------------------	--------------	----------	------	-----	-------	---------	---	------	--------	------

365MM x 1 3/4" Single and Two Plate

NMU006-230-1	104108-3	NCA-138006-1	External	3200	500	Round	Organic	8	1 3/4	M-2017	7"
NMU006-093-1	104100-1	NCA-138006-1	External	3200	520	3-Paddle	Ceramic	8	1 3/4	M-1978	7"
NMU006-093-2	104100-2	NCA-138006-1	External	3200	660	3-Paddle	Ceramic	8	1 3/4	M-1978	7"
NMU001-230-2	104101-8	NCA-138001-2	External	3200	660	Round	Organic	8	1 3/4	M-2017	7"
NMU005-103-1-A	104200-1	NCA-138005-1	External	2500	860	3-Paddle	Ceramic	8	1 3/4	M-1950 M-1951	7"
NMU010-230-2-A	104202-5	NCA-138010-2	External	3200	860	Round	Organic	8	1 3/4	M-2010 M-2011	7"
NMU167-353-1-G**	3400001167, 15340000015, 153482128802	NCA-365167-1	External	3200	660	3-Paddle	Ceramic	6	1 3/4	M-2200	7.5"

** Includes Sleeve and Release Bearing M-2061

CLUTCH APPLICATIONS

Medium Duty



Engine	Years	Number of Cylinders	IATCO Part Number	O.E.M. Reference	Cover Assembly Number	Torque Rating (lb-ft)	Friction Material	Disc (in/mm)	Disc	Spline Size	Notes
--------	-------	---------------------	-------------------	------------------	-----------------------	-----------------------	-------------------	--------------	------	-------------	-------

Chevrolet and GMC (5500, 6500, & 7500)

Gas, C & T Series, Topkick & Kodiak, C-50 & C-60, GM 366	1965-2001	8	NMU1928-137	107606-1	NCA-330-1928	400	Ceramic	330	M-0998-CV	1½	Lever Type
			NMU038-194-3	107606-1	NCA-102038	400	Ceramic	310	M-1805	1½	Diaphragm Type
Gas, C & T Series, Topkick & Kodiak, C-50 & C-60, GM 427, GMC Gas & Diesels, Brigadier General	1986-2001	6 & 8	NMU2076-139	LP2076-139	NCA-330-2076	500	Ceramic	330	M-1354	1½	Lever Type
	1986-1993		NMU048-024-3	107621-1	NCA-102048	500	Ceramic	350	M-1331	1½	Diaphragm Type
	1979-1985		NMU1686-138	LP1686-138	NCA-14-1686	500	Ceramic	14"	M-0884-CV	1½	Lever Type
	1962-1974		NMU1107-145	LP1107-145	NCA-14-1107	500	Organic	14"	M-0534	1¾	Lever Type
Diesel, C & T Series, Topkick & Kodiak, Cat 3116, Cat 3126B, Cat C-7	1986-2008	6	NMU2076-139	LP2076-139	NCA-330-2076	500	Ceramic	330	M-1354	1½	Lever Type
	1990-2008		NMU059-022-1	107683-5	NCA-129059-1	650	Ceramic	14"	M-1507	1¾	Pull Type
			NMU060-022-5-A	107237-10	NCA-129060-5 FW-140 Int. Pl.	900	Ceramic	14"	M-1508 M-1507	1¾	Pull Type
Gas, GM 454, 7400MD	1999-2000	8	NMU2076-137	LP2076-137	NCA-330-2076	500	Ceramic	330	M-0998-CV	1½	Small Flywheel ID
Gas, C & T Series, Topkick & Kodiak, GM Vortec, 8100MD	1997-2001	8	NMU2076-139	LP2076-139	NCA-330-2076	500	Ceramic	330	M-1354	1½	Lever Type
Diesel, Duramax, C & T Series, Topkick & Kodiak, 6600	1997-2001	6	NMU2076-139	LP2076-139	NCA-330-2076	500	Ceramic	330	M-1354	1½	Lever Type
Diesel, Duramax, C & T Series, Topkick & Kodiak, (Isuzu) 7800	1990-2008	6	NMU101-023-3	107350-3	NCA-102101	500	Ceramic	350	M-1578	1½	Diaphragm Type
			NMU600-024-2	107401-1	NCA-129060-2	560	Ceramic	14"	M-0950	1¾	Pull Type Short Sleeve
DDC 6-71, DDC6V-53, Brigadier General	1966-1981	6	NMU1113-144	LP1113-604	NCA-14-1113 L-1480 Int. Pl.	750	Organic	14"	M-0648-CV M-0647-CV	1¾	Two Plate Assembly
Diesel, W Series, Isuzu	1988-2008	6	NMU1928-137	107606-1	NCA-330-1928	520	Ceramic	330	M-0998-CV	1½	Lever Type
			NMU038-194-3	107606-1	NCA-102038	400	Ceramic	310	M-1805	1½	Diaphragm Type
			NMU101-023-3	107350-3	NCA-102101	500	Ceramic	350	M-1578	1½	Diaphragm Type
			NMU101-024-3	107350-2	NCA-102101	500	Ceramic	350	M-1331	1½	Diaphragm Type
			NMU600-024-2	107401-1	NCA-129060-2	560	Ceramic	14"	M-0950	1¾	Pull Type Short Sleeve

Dodge Truck

Gas, CHR 318, CHR 361, Diesel, Perk 354	1967-1982	6 & 8	NMU1938-124	LP1938-124	NCA-330-1928	400	Organic	330	M-0929-CV	1¾	Lever Type
---	-----------	-------	-------------	------------	--------------	-----	---------	-----	-----------	----	------------

CLUTCH APPLICATIONS

Medium Duty

Engine	Years	Number of Cylinders	IATCO Part Number	O.E.M. Reference	Cover Assembly Number	Torque Rating (lb-ft)	Friction Material	Disc (in/mm)	Disc	Spine Size	Notes
--------	-------	---------------------	-------------------	------------------	-----------------------	-----------------------	-------------------	--------------	------	------------	-------

Ford Truck (F-450, 550, 650, & 750)

Gas, F Series, FD 330, 361, 370, 391, 429, 477	1965-1995	6 & 8	NMU1938-124	LP1938-124	NCA-330-1938	400	Organic	330	M-0929-CV	1 $\frac{3}{8}$	Lever Type
			NMU1938-127	107943-3	NCA-330-1938	520	Ceramic	330	M-0938-CV	1 $\frac{3}{8}$	Lever Type
			NMU038-174-3	107943-3	NCA-102038	400	Ceramic	310	M-1803	1 $\frac{3}{8}$	Diaphragm Type
			NMU1938-137	LP1938-137	NCA-330-1938	520	Ceramic	330	M-0998-CV	1 $\frac{1}{2}$	Lever Type
			NMU038-194-3	107943-1	NCA-102038	400	Ceramic	310	M-1805	1 $\frac{1}{2}$	Diaphragm Type
Gas (Super Duty), 370, 429	1979-1983	6 & 8	NMU1940-134	LP1940-134	NCA-330-1940 L-1322 Int. Pl.	525	Organic	330	M-0626-CV M-0625-CV	1 $\frac{1}{2}$	Lever Type
Gas (Super Duty), 401, 475, 477, 534	1964-1978	6 & 8	NMU1940-132	LP1940-132	NCA-330-1940 L-1322 Int. Pl.	400	Organic	330	(2) M-1200	1 $\frac{1}{2}$	Lever Type
Diesel, Cat 3208, (Early Push Type), Cat 1160 (V-225), Cat 1150 (V-200), Cat 1145 (V-175), Cat 1140 (V-150), Cum 555 (V-555)	1969-1986	8	NMU1938-134	LP1938-134	NCA-330-1938	400	Organic	330	M-0622-CV	1 $\frac{1}{2}$	Lever Type
			NMU1686-134	LP1686-134	NCA-14-1686	420	Organic	14"	M-0638-CV	1 $\frac{1}{2}$	Lever Type
			NMU1072-134	LP1072-134	NCA-14-1072 L-1487 Int. Pl.	550	Organic	14"	M-0642-CV M-0641-CV	1 $\frac{1}{2}$	Lever Type
Diesel, Cat 3208, (Late Pull Type), Cat 3126, Cat C-7, Ford, FD1060, FD1460, Cummins, B5,9, C 8.3, ISB ISC	1987-2008	6 & 8	NMU059-022-1	107683-5	NCA-129059-1	650	Ceramic	14"	M-1507	1 $\frac{3}{4}$	Pull Type
			NMU060-022-5-A	107237-10	NCA-129060-5 FW-140 Int. Pl.	900	Ceramic	14"	M-1508 M-1507	1 $\frac{3}{4}$	Pull Type
Diesel, Cargo Series, 6.6L	1985-1993	6 & 8	NMU710-023-3-J	107688-7	NCA-129710-3-J	520	Ceramic	14"	M-1220	1 $\frac{1}{2}$	Pull Type
			NMU059-022-1	107683-5	NCA-129059-1	650	Ceramic	14"	M-1507	1 $\frac{3}{4}$	Pull Type
Diesel, Cargo Series, 7.8L	1985-1993	6 & 8	NMU060-022-5-A	107237-10	NCA-129060-5 FW-140 Int. Pl.	900	Ceramic	14"	M-1508 M-1507	1 $\frac{3}{4}$	Pull Type

Freightliner (MD, FL, & M2)

Diesel, Business Class, M Series, FL Series, Cummins, B5,9, C8,3, ISB, ISC, MBE900	1988-2008	6	NMU048-024-3-G* (Includes Release Bearing)	107621-7	NCA-102048	500	Ceramic	350	M-1331	1 $\frac{1}{2}$	Diaphragm Type
			NMU059-022-1	107683-5	NCA-129059-1	650	Ceramic	14"	M-1507	1 $\frac{3}{4}$	Pull Type
			NMU060-022-5-A	107237-10	NCA-129060-5 FW-140 Int. Pl.	900	Ceramic	14"	M-1508 M-1507	1 $\frac{3}{4}$	Pull Type
			NMU061-092-5-A	107342-11	NCA-129061-5 FW-140 Int. Pl.	900	Ceramic	14"	M-1679 M-1678	2	Pull Type
MB OM366LA, Cummins B5.9	1988-2002	6	NMU048-024-3-G* (Includes Release Bearing)	107621-7	NCA-102048	500	Ceramic	350	M-1331	1 $\frac{1}{2}$	Diaphragm Type
M2 MBE904		4	NMU006-093-1	104100-1	NCA-138006-1	520	Ceramic	365	M-1978	1 $\frac{3}{4}$	Diaphragm Type
M2 MBE906		6	NMU006-093-2	104100-2	NCA-138006-1	660	Ceramic	365	M-1978	1 $\frac{3}{4}$	Diaphragm Type
M2 MBE906		6	NMU005-103-1-A	104200-1	NCA-138005-1	860	Ceramic	365	M-1950 M-1951	1 $\frac{3}{4}$	Diaphragm Type
M2 w/ CAT C7 Diesel	2003-2006		NMU167-353-1-G	3400001167, 153400000015, 153482128802	NCA-365167-1	660	Ceramic	365	M-2200	1 $\frac{3}{4}$	Diaphragm Type

Hino (145, 165, 185, 238, 258, 268, & 338)

FA, FB, H06C-T	1989-2008	4	NMU104-194-3	107310-1	NCA-102104	400	Ceramic	310	M-1805	1 $\frac{1}{2}$	Diaphragm Type
FA, FB, FD, FE, FF, FS, SG, 165, 185J05, D-TA, J05C-TD, J05D-TF, J08C-TP, J08C-TR	1989-2010	4 & 6	NMU110-024-3	107350-1	NCA-102101	500	Ceramic	350	M-1333	1 $\frac{3}{4}$	Diaphragm Type
238, 258LP, 268, 268A, 338, J08E-TA, J08E-TV, J08E-VC, J08E-TW	2005-2011	6	NMU059-022-1	107683-5	NCA-129059-1	650	Ceramic	14"	M-1507	1 $\frac{3}{4}$	Pull Type
			NMU060-022-5-A	107237-10	NCA-129060-5 FW-140 Int. Pl.	900	Ceramic	14"	M-1508 M-1507	1 $\frac{3}{4}$	Pull Type
338, 338CT, J08E-VB	2005-2011	6	NMU060-022-5-A	107237-10	NCA-129060-5 FW-140 Int. Pl.	900	Ceramic	14"	M-1508 M-1507	1 $\frac{3}{4}$	Pull Type

* Includes Sleeve & Bearing Assembly M-1710 (Freightliner)

CLUTCH APPLICATIONS

Medium Duty



Engine	Years	Number of Cylinders	IATCO Part Number	O.E.M. Reference	Cover Assembly Number	Torque Rating (lb-ft)	Friction Material	Disc (in/mm)	Disc	Spline Size	Notes
--------	-------	---------------------	-------------------	------------------	-----------------------	-----------------------	-------------------	--------------	------	-------------	-------

International Truck (Dura Star 4100, 4300, & 4400)

Diesel, Navistar, 3.9, 6.9, 7.3	1987-1996	6 & 8	NMU1928-137	107606-1	NCA-330-1928	400	Ceramic	330	M-0998-CV	1½	Lever Type
			NMU038-194-3	107606-1	NCA-102038	400	Ceramic	310	M-1805	1½	Diaphragm Type
			NMU1047-134	LP1047-134	NCA-14-1047	500	Organic	350	M-0638-CV	1½	Lever Type
Gas & Diesel, Navistar, D354, V304, V345, V549, VS401, VS478, VS549, 392, BC150, BD100, DV550, RD372, 406, 450, 461, 501, RD501, RD450	1965-1996	6 & 8	NMU1933-134	LP1933-134	NCA-330-1933	450	Organic	330	M-0622-CV	1½	Lever Type
			NMU048-024-3	107621-1	NCA-102048	500	Ceramic	350	M-1331	1½	Diaphragm Type
			NMU1047-134	LP1047-134	NCA-14-1047	500	Organic	350	M-0638-CV	1½	Lever Type
Diesel, Navistar, DT360, DT466, DT530, DT530, Maxx Force 7, 9	1985-2008	6 & 8	NMU059-022-1	107683-5	NCA-129059-1	650	Ceramic	14"	M-1507	1¾	Pull Type
			NMU060-022-5-A	107237-10	NCA-129060-5 FW-140 Int. Pl.	900	Ceramic	14"	M-1508 M-1507	1¾	Pull Type

Isuzu (N, F, & H Series)

Diesel, 6BGI-NA, 6BGI-TC, 6HKI, 6HEI-TCN, 6HKI-TCN, 6HEI-T	1988-2008	6	NMU1928-137	107606-1	NCA-330-1928	400	Ceramic	330	M-0998-CV	1½	Lever Type
			NPR	1988-2008	4	NMU038-194-3	107606-1	NCA-102038	400	Ceramic	310
Diesel, FSR, FTR, FVR, FPR	1988-2008	6	NMU110-024-3	107350-1	NCA-102101	500	Ceramic	350	M-1333	1¾	Diaphragm Type
			NMU101-023-3	107350-3	NCA-102101	500	Ceramic	350	M-1578	1½	Diaphragm Type
Diesel, FVR, EVR	1988-2008	6	NMU101-024-3	107350-2	NCA-102101	500	Ceramic	350	M-1331	1½	Diaphragm Type
			NMU600-024-2	107401-1	NCA-129060-2	560	Ceramic	14"	M-0950	1¾	Pull Type Short Sleeve
Diesel, 7.8L, 6HKI	2005-2008	6	NMU059-022-1	107683-5	NCA-129059-1	650	Ceramic	14"	M-1507	1¾	Pull Type
			NMU060-022-5-A	107237-10	NCA-129060-5 FW-140 Int. Pl.	900	Ceramic	14"	M-1508 M-1507	1¾	Pull Type

Kenworth (K-260, K-270, T-170, T-270, T-300, & T-370)

ISB, ISC, PX-6, PX-8	1989-2008	6	NMU059-022-1	107683-5	NCA-129059-1	650	Ceramic	14"	M-1507	1¾	Pull Type
			NMU060-022-5-A	107237-10	NCA-129060-5 FW-140 Int. Pl.	900	Ceramic	14"	M-1508 M-1507	1¾	Pull Type
			NMU061-092-5-A	107342-11	NCA-129061-5 FW-140 Int. Pl.	900	Ceramic	14"	M-1679 M-1678	2	Pull Type

Mack-Midliner (Renault) (RVI) (MS200 & MS250) (CS200 & CS250)

Diesel, MS200, MS250, 5.5L, 6.2L, 8.8L	1983-1999	6	NMU1935-136	LP1935-136	NCA-330-1935	520	Ceramic	330	M-0702-CV	1½	Spicer & Eaton Trans.
			NMU101-024-3-G* (Includes Release Bearing)	107350-4	NCA-102101	500	Ceramic	350	M-1331	1½	Spicer Trans. Only

Peterbilt (200, 220, 330, & 335)

ISB, ISC, PX-6, PX-8	1989-2008	6	NMU059-022-1	107683-5	NCA-129059-1	650	Ceramic	14"	M-1507	1¾	Pull Type
			NMU060-022-5-A	107237-10	NCA-129060-5 FW-140 Int. Pl.	900	Ceramic	14"	M-1508 M-1507	1¾	Pull Type
			NMU061-092-5-A	107342-11	NCA-129061-5 FW-140 Int. Pl.	900	Ceramic	14"	M-1679 M-1678	2	Pull Type

Sterling (Acterra)

Diesel, Cum ISB, ISC, MBE 900, Cat C-7	1998-2008	6	NMU059-022-1	107683-5	NCA-129059-1	650	Ceramic	14"	M-1507	1¾	Pull Type
			NMU060-022-5-A	107237-10	NCA-129060-5	900	Ceramic	14"	M-1508 M-1507	1¾	Pull Type

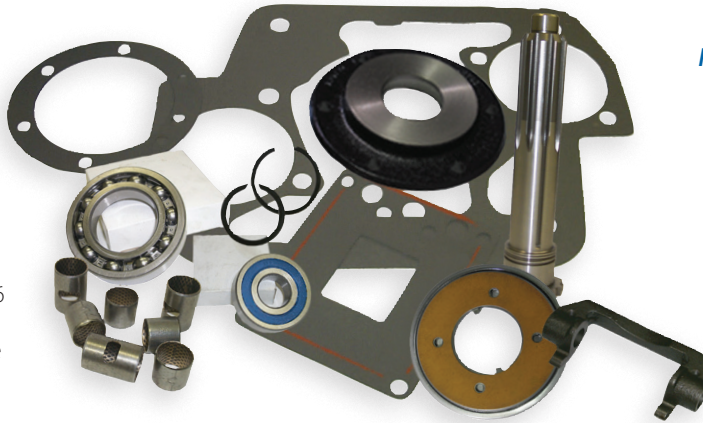
* Includes Sleeve & Bearing Assembly M-1615 (Mack-Midliner)

CLUTCH PARTS

Essential Tools for Proper Clutch Installation

Everything You Need for a Complete Clutch Installation DONE RIGHT

Prevent the need to pull your transmission again after you have completed your clutch installation. Replace all clutch related wear components to ensure smooth engagement and reduce the chance of misalignment. The *Illinois Auto Truck Co., Inc.* Clutch Installation Kits cover 2" input shaft, pull-type applications, for popular *EATON® FULLER®* RT and FR transmission models. M-1915 & M-1916 kits contain *MACK®* application pilot bearings. All kits include clutch release fork (M-1263). ALL pilot bearings are the newest type with high temperature grease and seals.



Parts Included:

- Clutch Brake
- Clutch Release Fork
- Cross Shaft Bushings
- Front Bearing Cover
- Gaskets (Clutch Housing, Shift Lever & Front Bearing Cover)
- High Temperature Pilot Bearing
- Input Shaft
- Input Shaft Bearing
- Retaining Rings

Clutch Installation Kits

IATCO Part Number	O.E.M. Reference	Description / Application
M-1771	K-2468	Fuller RT Series
M-1771-E	K-2468	Fuller RT Series (With Hinged Clutch Brake)
M-1993	K-3762	Fuller RT Series (Severe Duty - PTO Applications)
M-1916	K-3599	Fuller Mack RT Series
M-2076	K-4125	Fuller RT Series (With Hydraulic Clutch Fork)
M-2117	K-3768	Fuller RT Series (With 14-Spline Input Shaft)
M-2110	K-4145	UltraShift <i>PLUS</i> Series
M-1910	K-3600	Fuller FR Series
M-1915	K-3601	Fuller MACK FR Series
M-2075	K-4124	Fuller FR Series (With Hydraulic Clutch Fork)

IATCO Part Number	O.E.M. Reference	Description / Application
M-2160	K-3602	Fuller FR Series (With Original Design Input Shaft - 4302315)
M-2059	N/A	Meritor RM, RMO, RMX & G Series
M-2031	N/A	Basic Clutch Installation Kit: 2" Torque Limiting Clutch Brake, Clutch Fork, and (4) Cross Shaft Bushings
M-2165	N/A	Clutch Bundle Kit - Manual (used with new / rebuilt transmission): High Temp Pilot Bearing, 2" Torque Limiting Clutch Brake, Clutch Fork, Gasket Kit, Cross Shaft Bushing Kit
M-2166	N/A	Clutch Bundle Kit - Hydraulic (used with new / rebuilt transmission): High Temp Pilot Bearing, 2" Torque Limiting Clutch Brake, Hydraulic Clutch Fork, Gasket Kit

Flywheels

IATCO Part Number	O.E.M. Reference	Application	Ring Gear Teeth	Crank Mounting Bolt Holes	Clutch Mounting Bolt Holes	Flywheel Bore	Pilot Bearing
FW-2005	1265875	CAT 3116 / 3126	134	8	12/2	7"	6206 6305
FW-2011	256-9653	CAT C-15, C-16, C-18, 3406	113	12	12	10"	6306
FW-2006	3921263 4933458	Cummins 5.9L (B Series)	173	8	12/2	7"	6206 6305
FW-2010	3680922	Cummins ISX Signature 600	113	12	12	10"	6306
FW-2002	3071615	Cummins L-10 / M-11	103	8	12	7"	6306
FW-2003	3071535 3609903	Cummins NT855 / N14	103	6	12	10"	6306
FW-2015	3016495	Cummins NT855 Small Cam / Big Cam (Pot-Type)	103	6	12	7"	6306
FW-2024	3977281, 3974147, 5445608, 3921250	Cummins B Series ISB 6.7	138	8	12/2	7"	6306
FW-2009	23514177	Detroit Diesel Series 60 (Light-Weight)	118	12	12	10"	6306
FW-2018	A471 030 07 05	Detroit Diesel DD15 (with AMT)	160	12	12	10"	6306
FW-2019	A472 030 11 05	Detroit Diesel DD15 (with Manual Transmission)	160	12	12	10"	6306
FW-2022	460 030 0305	Detroit Diesel MBE 4000 Series	160	10	12	10"	6306
FW-2012	21514061 20790714	Mack / Volvo MP7	153	13	12	10"	6306
FW-2001	530GB3145BM	Mack E7	118	6	12	10"	6306
FW-2013	530GB3170M	Mack E7-E Tech	117	6	12	10"	6306
FW-2017	1809144C91	Navistar 6.9L / 7.3L	137	9	12/2	7"	6205
FW-2008	1818214C91	Navistar 7.3L 444E	137	10	12/2	7"	6206 6305
FW-2007	1821915C91	Navistar DT466E	138	12	12	7"	6206 6305
FW-2014	21184666	Volvo I-Shift	153	14	12	10"	6306
FW-2023	20730056	Volvo VED12	153	12	14/1	10"	6306



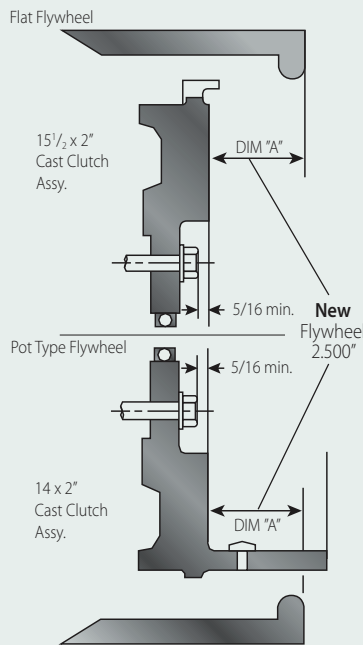
CLUTCH PARTS

Quality Replacement Clutch Components

When to Use an Oversized Clutch Brake or Brake Washer

Every clutch replacement requires flywheel resurfacing. The use of ceramic friction materials requires more material be removed in the resurfacing process. This results in the clutch assembly being moved closer to the engine and away from the transmission. Pre-adjustment of the clutch to compensate for a larger "clutch envelope" results in diminished adjustment during the life of the clutch and can even cause malfunction within the clutch assembly.

After installing the resurfaced flywheel, determine dimension "A" as shown in the drawing below. Then select the corresponding clutch brake (hinged or torque limiting) and/or washer from the charts at right. Installing a thicker clutch brake will minimize the amount of clutch preadjustment and maximize the life of the clutch.



NEW IMPROVED DESIGN! Hinged Locking Clutch Brake

The purpose of the clutch brake is to slow or stop transmission input shaft rotation when the clutch pedal is pressed. Now you can replace worn or damaged clutch brakes without removing the transmission.

Our new and improved Hinged Locking Clutch Brake installs easily with the turn of a bolt and is simply secured using the included 5/32 Allen Wrench, saving both time and money!

M-1610



Torque Limiting Clutch Brakes

IATCO Part Number	Description	O.E.M. Reference	DIM "A"
M-1609	1 3/4" Torque Limiting (.380" thick)	127740	2.500"-2.570"
M-1834	1 3/4" Torque Limiting (.500" thick)		2.660"-2.725"
M-1610	2" Torque Limiting (.380" thick)	127760	2.500"-2.570"
M-1782	2" Torque Limiting (.450" thick)		2.570"-2.660"
M-1783	2" Torque Limiting (.500" thick)		2.660"-2.725"

M-1881



Hinged Clutch Brakes

IATCO Part Number	Description	O.E.M. Reference	DIM "A"
M-1918	1 3/4" (.380" thick)	BK-312	2.500"-2.570"
M-1833	1 3/4" (.500" thick)		2.660"-2.725"
M-1881	2" (.380" thick)	BK-313	2.500"-2.570"
M-1882	2" (.450" thick)		2.570"-2.660"
M-1883	2" (.500" thick)		2.660"-2.725"
M-1917	2" (.550" thick)		2.725"-2.775"

Installation Suggestion - Use a drop of Loctite® on the bottom of the thread

M-1882



M-1883

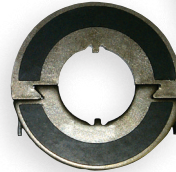
M-1073



Standard Clutch Brakes

IATCO Part Number	Description	O.E.M. Reference	DIM "A"
M-1073	1 3/4" One-Piece	127187X	2.500"-2.570"
M-1074	2" One-Piece	127237X	2.500"-2.570"
M-1017	1 3/4" Two-Piece	127175	2.500"-2.570"
M-1018	2" Two-Piece	127200	2.500"-2.570"

M-1018

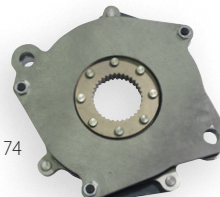


Clutch Brake Washers

Use with full clutch brakes to compensate for material removed from flywheel. Washer dimensions used only with recommended clutch brakes M-1609, M-1610, M-1881, or M-1918.

IATCO Part Number	Description	O.E.M. Reference	DIM "A"
M-1901	1 3/4" (.125" thick)	125C-40	2.570"-2.660"
M-1902	1 3/4" (.187" thick)		2.660"-2.725"
M-1826	2" (.125" thick)	125C-41	2.570"-2.660"
M-1827	2" (.187" thick)		2.660"-2.725"

M-2174



MaxShift Clutch® Clutch Brake

IATCO Part Number	O.E.M. Reference	Description
M-2174	K-4134	MaxShift Clutch® Clutch Brake (Used with UltraShift® & UltraShift Plus® Transmissions)

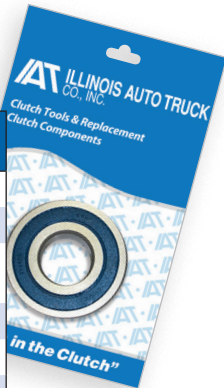
CLUTCH PARTS

Quality Replacement Clutch Components

Pilot Bearings

Important wear components to replace in a new installation.

IATCO Part Number	Description
6203-ZZ	1.574" x .668"
6204-ZZ	1.850" x .786"
6205-2RS2/C4-HT	2.046" x .983" (high temperature)
6205-ZZ	2.046" x .983"
6206-ZZ	2.440" x 1.180"
6206-2RS-HT	2.440" x 1.180" (high temperature)
6304-ZZ	2.046" x .786"
6305-ZZ	2.440" x .985"
6306-ZZ	2.833" x 1.179"
6306-ZZ-S	2.833" x 1.179" (with snap ring) (Mack)
6306-ZZ-SRG	2.833" x 1.179" (with groove only)
6306-2RS-HT	2.833" x 1.179" (high temperature)
6306-2RS2/C5-S-HT	2.833" x 1.179" (high temperature with snap ring) (Mack)



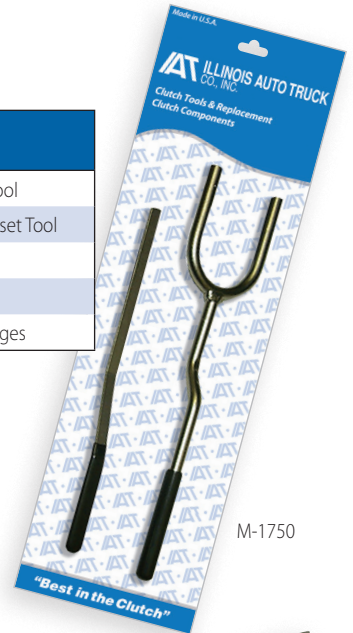
Clutch Tools

Ensure correct adjustment for proper clutch operation.

IATCO Part Number	Description
T-103	Clutch Adjusting Tool
T-106	Self-Adjusting Clutch Reset Tool
M-1748	1/8" Gauge
M-1749	1/2" Gauge
M-1750	Tool Kit of both Gauges



T-106



M-1750

Bell Housing Cover Kits & Hoses

IATCO's handhole covers come equipped with a rubber grommet plug which allows the passage of grease through a hose while sealing the oversized hole to outside contaminants. They replace O.E.M. number 4305230, and include the cover, plug, mounting screws, lock washers and popular hose lengths from 6"-12".

IATCO Part Number	Description	IATCO Hoses Part Number
M-1875	No Hose included	
M-1888	6" hose	M-1884
M-1889	7" hose	M-1885
M-1880	8" hose	M-1608
M-1890	9" hose	M-1886
M-1891	12" hose	M-1887



Adjustment Mechanisms

IATCO Part Number	O.E.M. Reference	Description
M-1928	125489	Spring-A-Just
M-1325	125300	Ease-A-Just



M-1928

Anti-Rattle Springs

IATCO Part Number	O.E.M. Reference	Description
M-1137	161C-5	Anti-Rattle Spring
M-1137-3	127492X	Set of 3 Anti-Rattle Springs



M-1137

Sleeve & Bearing Assemblies

Special bearing assemblies for special applications.

IATCO Part Number	O.E.M. Reference	Description
M-1615	187144	1 1/2" Mack-Midliner
M-1710	187140	1 1/2" Freightliner
M-1419	572107C91	1 1/2" Navistar



M-1615



M-1710



M-1419

Drive Lugs and Nuts

IATCO Part Number	Description
M-0226-R	Drive Lug
M-0360	Drive Lug (Mack)
M-1030	Drive Lug Nut (Mack)
M-0226-R-6	Set of 6 Drive Lugs
M-1829	Set of 6 Drive Lugs & 12 Allen Head Screws
M-0360-6	Set of 6 Drive Lugs (Mack)
M-1030-6	Set of 6 Drive Lug Nuts (Mack)
M-1828	Set of 6 Drive Lugs & 6 Drive Lug Nuts (Mack)
FW-145	Set of 8 Mounting Bolts & 8 Washers (14" Stamped Steel - Single Plate)
FW-146	Set of 8 Mounting Bolts & 8 Washers (14" Stamped Steel - Two Plate)
FW-149	Set of 8 Mounting Bolts & 8 Washers (15 1/2" Clutches)



CLUTCH TOOLS & PARTS

Essential Tools for Proper Clutch Installation

Application Specific Products



Freightliner

IATCO Part Number	O.E.M. Reference	Description / Application
M-2007	A02-12321-005 A02-12765-002 A02-13110-002	Clutch Rod (Columbia, FLD, Century & M2 Series)
M-2052	A 681-291-0082	Clutch Pedal Pad (Century, Columbia & M2 Series)

Kenworth

IATCO Part Number	O.E.M. Reference	Description / Application
M-2049	K160-2380	Clutch Control Lever
M-2053	K224-130	Clutch Return Spring
M-2054	K202-2503-0498	Clutch Rod

Mack

IATCO Part Number	O.E.M. Reference	Description / Application
M-1994	201-SC-15	Lubrication Hose
M-2038	25175065	Flex-Clutch Cable
M-2055	25109197	Clutch Return Spring
M-2056	25195158	Clutch Pedal Pad

Peterbilt

IATCO Part Number	O.E.M. Reference	Description / Application
M-2006	06-00754	Clutch Pedal Pad (357, 378 & 379 Series)
M-2028	06-00715	Cross Shaft Lever (387 Series)
M-2036	06-01088	Clutch Linkage
M-2039	06-00984	Ball Joint End
M-2047	16-04996	Clutch Switch (PB & KW Trucks Equipped w/ Jake Brake)
M-2066	06-00910M014	Clutch Lever (357, 375, 379 & 385 Series)

Volvo

IATCO Part Number	O.E.M. Reference	Description / Application
M-2037	K-3732 85108980	Lubrication Hose



Forks, Cross Shafts, & Bushings

Essential replacement wear components to avoid misalignment.

IATCO Part Number	O.E.M. Reference	Description / Application
M-1263	105C-137	Clutch Release Fork
M-2062	A-7786	Hydraulic Clutch Release Fork
M-2044	125596	Clutch Roller Fork (365mm Clutches)
M-2104	A-8133	Roller Clutch Fork (UltraShift Plus)
M-2193	A-7414	Hydraulic Clutch Fork (Volvo)
M-2044	125596	Roller Clutch Fork (365mm Clutches)
M-2193	A-7414	Hydraulic Clutch Fork Adapter (Volvo)
M-1654	106C-1185	Cross Shaft (5 ³ / ₄ "
M-1655	106C-1498	Cross Shaft (6 ¹ / ₂ "
M-1662	106C-1047	Cross Shaft (9 ¹ / ₂ "
M-1664	106C-939	Cross Shaft (10")
M-1616	12815	Cross Shaft Bushing
M-1616-4	12815	Set of 4 Cross Shaft Bushings
M-2046	25156099	Clutch Lever Bushing (Mack)
M-1992	02-12467-004	Cross Shaft (Freightliner Columbia / Century) (9 ¹ / ₂ "
M-1998	02-09788-007	Cross Shaft (Freightliner FLD) (8 ³ / ₄ "
M-2171	02-12631-007	Cross Shaft (Freightliner Cascadia / M2) (9 ¹ / ₂ "
M-2186	02-13154-000	Cross Shaft (Freightliner M2 112)
M-1985	2005-406-C1	Cross Shaft (International 5000 & 900 Series) (9 ¹ / ₂ "
M-1987	483-767-C1	Cross Shaft (International 3000 & 4000 Series) (8")
M-2069	476337C2	Cross Shaft (International 2000 Heavy Duty, 3000 School Bus & 4000 Medium Duty Trucks) (8 ¹ / ₂ "
M-2089	3532871C1	Cross Shaft (International / Navistar WorkStar) (8 ³ / ₂₅ "
M-1984	K210-883	Cross Shaft (Kenworth) (9")
M-2065	25173583	Cross Shaft (Mack) (9 ¹ / ₈ "
M-1986	06-01093	Cross Shaft (Peterbilt 387) (9 ⁵ / ₈ "
M-2118	06-00775	Cross Shaft (Peterbilt) (10 ⁵ / ₈ "
M-2073	8081040	Cross Shaft (Volvo) (8")
M-2074	8070269	Cross Shaft (Volvo) (8.385")
M-2134	8083479	Cross Shaft (Volvo) (8.31")

AMT Clutch Actuators & Solenoid Valve

IATCO Part Number	O.E.M. Reference	Application
A-1001	20806451, 21320923, 21465235, 21580956, 22429963, 22809232, 6482 000 155, K-4516CL	Clutch Actuator (Volvo I-Shift)
A-1002	A 003 250 21 15, 6482 000 218, K-4515CL	Clutch Actuator (Detroit Diesel DT12)
SV-2001	22327069	Solenoid Valve (Volvo I-Shift)

Clutch Alignment Tools & Drive Lug

Allows disc splines to be easily aligned to the main shaft.

IATCO Part Number	Number of Splines	Description
M-1751	10	1 ¹ / ₄ " spline x 1" pilot
M-1752	10	1 ³ / ₈ " spline x 1" pilot
M-1753	10	1 ¹ / ₂ " spline x 1" pilot
M-1754	10	1 ¹ / ₂ " spline x ³ / ₄ " pilot
M-1755	10	1 ¹ / ₂ " spline x 1.18" pilot
M-1756	10	1 ³ / ₄ " spline x 1" pilot
M-1757	10	1 ³ / ₄ " spline x 1.18" pilot
M-1758	10	2" spline x 1.18" pilot
M-1977	14	2" spline x 1.18" pilot
M-2188	24	50mm spline x 1.18" Pilot (used with Volvo I-Shift / Mack mDrive)
M-2195	18	50mm spline x .98" Pilot (used with Detroit DT12)
T-107	14	2" spline x 1.18" pilot (used with Heavy Duty ECA Clutch)
M-0285		Drive Lug Alignment Tool

FLYWHEEL GRINDERS & JACKS

Flywheel Grinders

Illinois Auto Truck Co., Inc. offers Van Norman Flywheel Grinders, that are ideal for machine shops, clutch rebuilders, fleet facilities & heavy / medium duty truck parts locations.

Flywheel Grinding machines are available in manual or automatic feed with 5 or 10 HP motors.

Each machine arrives with all the necessary materials to start grinding flywheels – 2 CBN wheels, Cone & Spacer Set, and a Rinse Nozzle Kit.

CBN Grinding Wheels, Grinding Stones and Coolant Additive (with 50/1 water to additive ratio) are also available.



VN8688-50K



VN8688-06K

IATCO Part Number	Feed	Horse-power	Volt	Phase	Includes
VN8688-40K	Manual	5	220	3	2 CBN Wheels, Cone & Spacer Set, Rinse Nozzle Kit
VN8688-50K	AutoGrind	5	220	3	2 CBN Wheels, Cone & Spacer Set, Rinse Nozzle Kit
VN8688-22K	Manual	10	220	3	2 CBN Wheels, Cone & Spacer Set, Rinse Nozzle Kit
VN8688-06K	AutoGrind	10	220	3	2 CBN Wheels, Cone & Spacer Set, Rinse Nozzle Kit



IATCO Jacks come with a 1-year, limited warranty.

TJ-43000

CJ-40300

Clutch & Transmission Jack

IATCO's Clutch & Transmission Jacks allows the clutch and transmission removal and installation to be a one mechanic operation. There is no assembly required for either jack.

The Clutch Jack handles up to 300 lbs. and the Transmission Jack handles up to 1.5 ton. Heavy duty casters are included with each jack for easy positioning.

IATCO's Jacks are built to deliver years of dependable service for truck maintenance and repair shops.

IATCO Part Number	Description
CJ-40300	14" & 15 1/2" Clutch Jack (Includes 1 3/4" & 2" Spline)
T-109	14-Spline Clutch Jack Shaft Adapter (Used w/ UltraShift or MaxShift Clutch)
TJ-43000	Transmission Jack

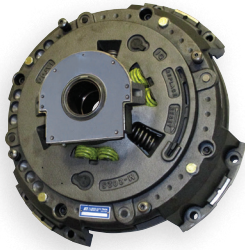
QUICK REFERENCE

Image Guide



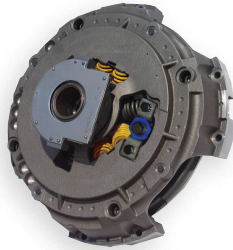
HEAVY DUTY CLUTCH ASSEMBLIES

AutoSet Clutch®



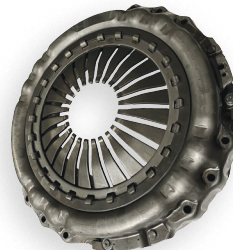
Page 4

EASY EFFORT®



Page 5

AMT



Page 6

Angle Spring®



Page 7

MEDIUM DUTY CLUTCH ASSEMBLIES

Stamped Steel



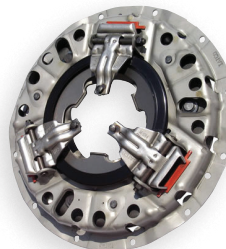
Page 8

330MM



Page 9

350MM



Page 10

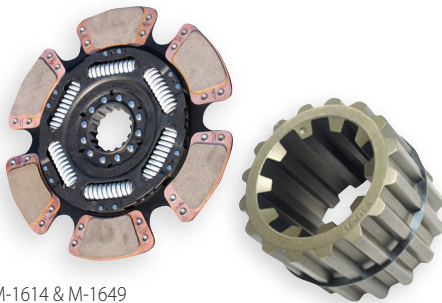
365MM



Page 10

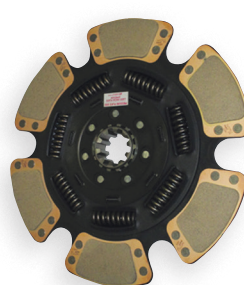
DISC ASSEMBLIES

6 Spring HDD (Heavy Duty Damper)



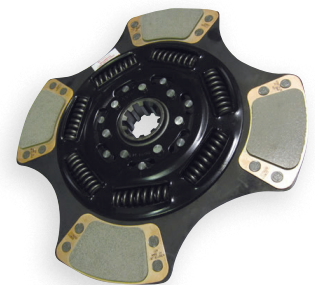
M-1614 & M-1649

7 Spring VAC (Vibration Absorption Control)



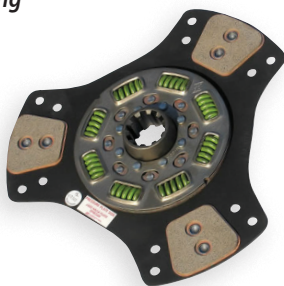
M-2144

7 Spring



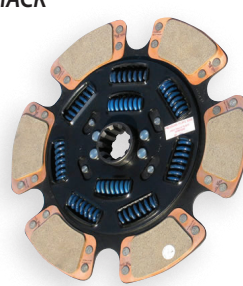
M-1980

8 Spring



M-1507

9 Spring MACK



M-1586

10 Spring



M-1128

AutoSet Clutch® and EASY EFFORT® are Registered Trademarks of Illinois Auto Truck Co., Inc. Angle Spring® is a Registered Trademark of Eaton Corporation.

CLUTCH COMPONENTS

Quality Replacement Clutch Components

Illinois Auto Truck Co., Inc. offers a complete line of clutch components for clutch rebuilders and clutch remanufacturers around the world.

All components used in IATCO assemblies are available for purchase. Components are available to rebuild Eaton, Rockwell / Meritor, Sachs, Lipe, Valeo, Long, Rockford and Borg & Beck clutch assemblies.

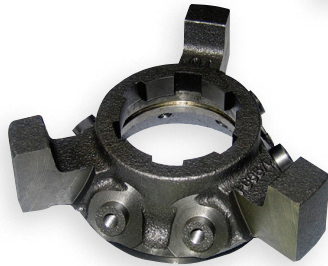
M-1969



M-1648



M-0276



M-0836



VSR-12



M-1649

Popular Clutch Component Sampling

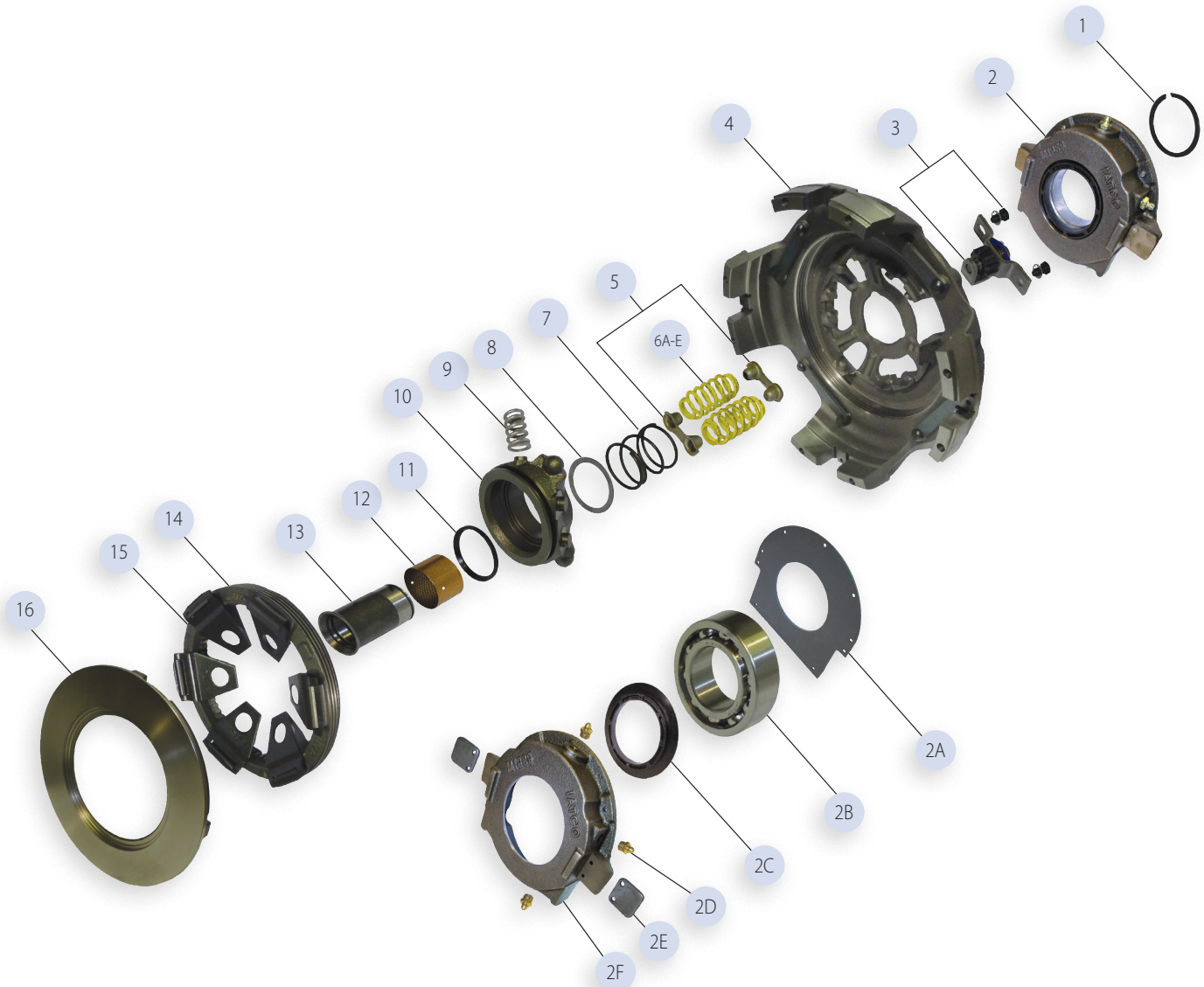
IATCO Part Number	O.E.M. Reference	Description
FW-136	213C-74	Flywheel Riser (14" Stamped Angle Spring®)
M-0205	124C-77	Bearing Cage (Used in Angle Spring Clutches - 1¾" & 2")
M-0215	127879, 125126	Bearing Cage (Used in Stamped Steel Clutches - 1¾" & 2")
M-0231	257C-29	Sleeve Bushing (1¾")
M-0276	C60-089	Clutch Lever (LiPe 14")
M-0386	242C-34	Spring Retainer (2" - Used in Angle Spring® Clutches)
M-0409	127859, 125014, 127389, 127863	Sleeve Assembly (1¾" - Used in Cast Iron Clutches)
M-0410	127393	Sleeve Assembly (2" - Used in Angle Spring® Clutches)
M-0515	259C-64	8-Spring Retainer Plate
M-0835	242C-101	Spring Retainer (1¾")
M-0836	242C-109	Spring Retainer (2" - Used in Stamped Steel Clutches)

IATCO Part Number	O.E.M. Reference	Description
M-0839	127873	Sleeve Assembly (1¾" - Used in Stamped Steel Clutches)
M-0843	127859X, 450255	Sleeve & Bearing Assembly (2")
M-1109		10-Spring Retainer Plate
M-1325	125300	Ease-A-Just
M-1361	125388	Sleeve Assembly (2" - Used in Easy Effort Clutches)
M-1435	130C-10	Diaphragm Spring (2400 Plate Load, Used in 310MM & 350MM Clutches)
M-1647		6-Spring Retainer Plate
M-1648		Clutch Disc Hub (2")
M-1649	125434	Spline Saver (2" x 10-Spline)
M-1793	195C-98, 195C-99	Adjusting Ring (14" & 15½" Acme Thread)
M-1929	242C-173	Spring Retainer (2" - Used in Easy Pedal Clutches)
M-1969		7-Spring Retainer Plate
VSR-12		Ceramic Button (.175" Thick)
VSR-13		Ceramic Button (.187" Thick)

Angle Spring® is a Registered Trademark of Eaton Corporation

CLUTCH COMPONENTS

15 1/2" x 2" **EASY EFFORT**® Cover Assembly Parts Listing



15 1/2" x 2" **EASY EFFORT**® Clutch Cover Component

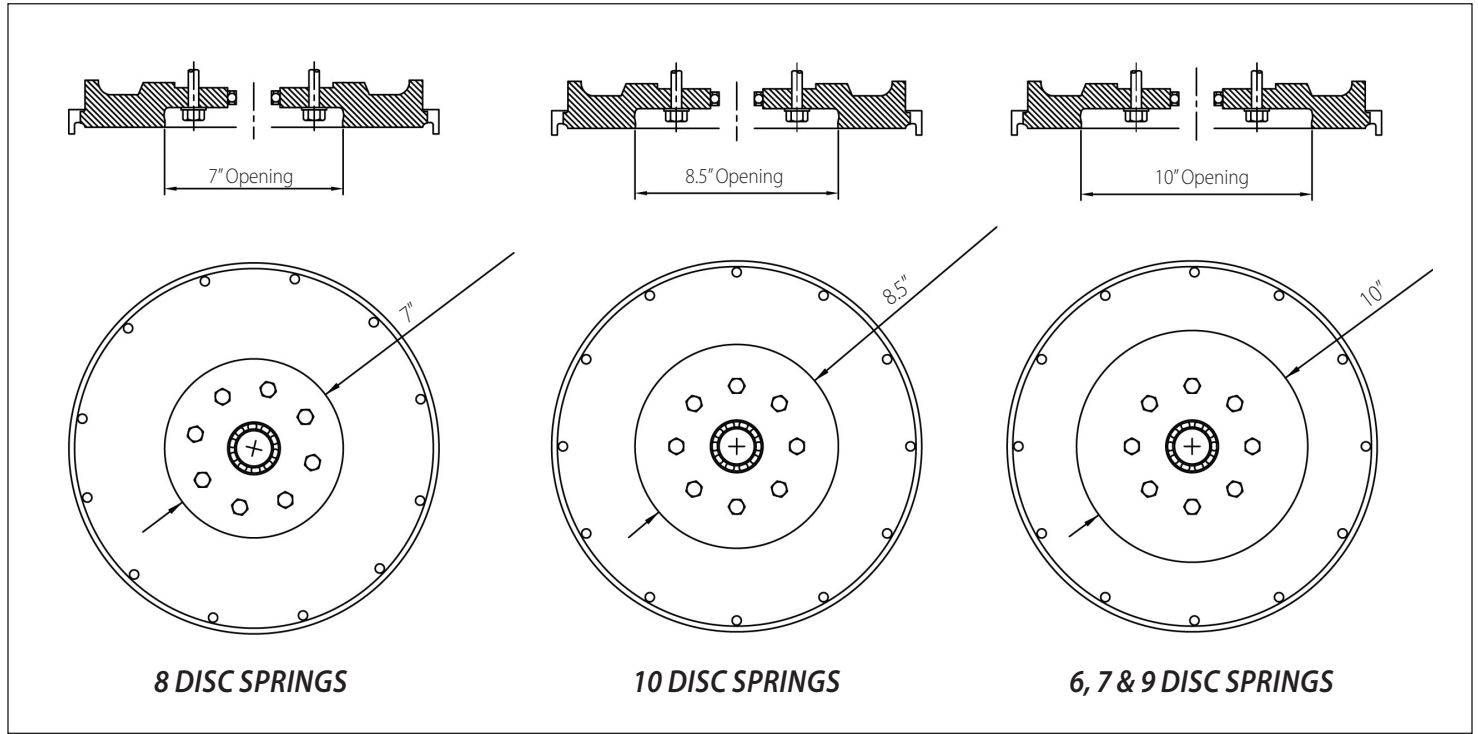
Reference	IATCO Part Number	Description
1	M-0256	Retaining Ring
2	M-1990	Bearing Cage Assembly
2A	M-0211	Bearing Cage Cover
2B	212-5	Release Bearing
2C	M-1991	Bearing Cage Seal
2D	M-0381	Grease Fitting
2E	M-1988	Wide Bearing Cage Pad
2F	M-1989	Bearing Cage
3	M-1928	Spring-A-Just
4	M-1866	EASY EFFORT® Cover
5	M-0392	Spring Pivot
6A	M-1474	Pressure Spring (3,200 lb. – Black)
6B	M-1475	Pressure Spring (3,400 lb. – Yellow)

Reference	IATCO Part Number	Description
6C	M-1476	Pressure Spring (4,000 lb. – White)
6D	M-1864	Pressure Spring (4,200 lb. – Purple)
6E	M-1999	Pressure Spring (4,800 lb. – Green)
7	M-1364	Sleeve Spring
8	M-1363	Sleeve Washer
9	M-1231	Assist Spring
10	M-1929	Spring Retainer
11	M-1362	Sleeve Seat
12	M-0260	Sleeve Bushing (2")
13	M-1361-A	Sleeve (2")
14	M-1793	Adjusting Ring
15	M-0489	Clutch Lever
16	S-1530	Pressure Plate

EASY EFFORT® is a Registered Trademark of Illinois Auto Truck Co., Inc.

TECHNICAL INFORMATION

FLYWHEEL CLEARANCE



*Ensure there is at least 5/16" clearance between the top of the flywheel mounting bolt head & the flywheel surface to prevent interference. If there is less than 5/16" clearance replace the flywheel.

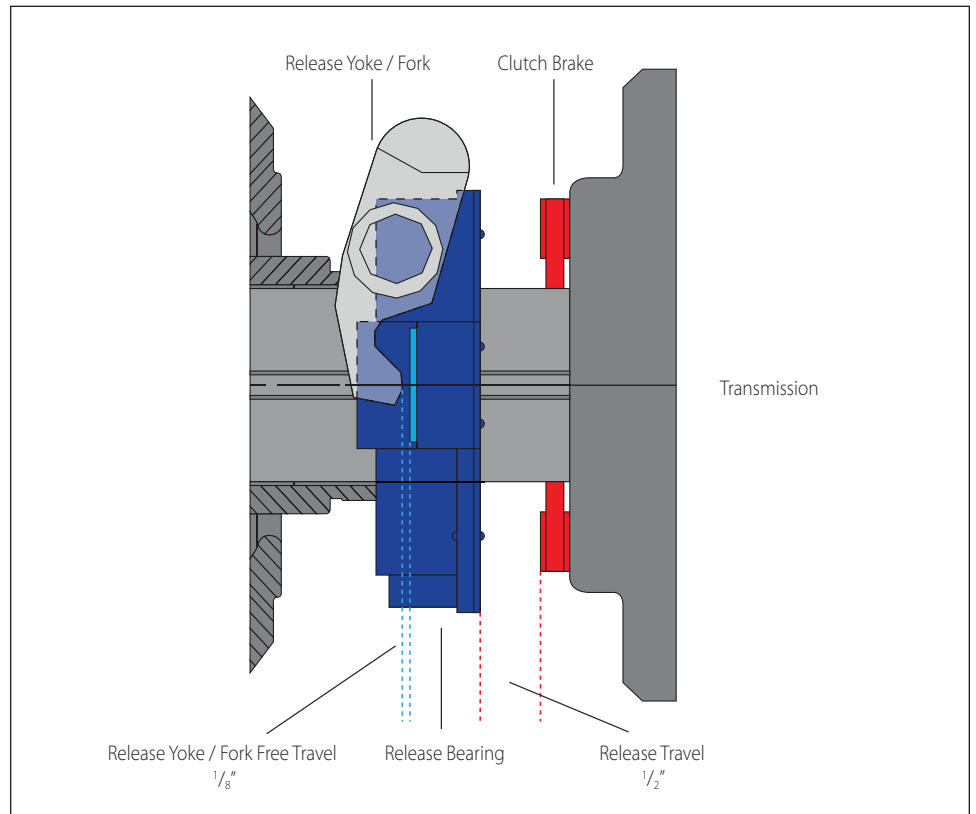
CLUTCH ENVELOPE

Illinois Auto Truck Co., Inc. refers to the distance between the flywheel and front bearing cap as the "clutch envelope". This distance becomes larger over time due to flywheel and front bearing cap wear.

When this occurs, initial clutch adjustment can cause premature failure. To extend the life of the clutch, instead of adjusting the clutch, install an oversized clutch brake to compensate for the oversized clutch envelope.

Refer to page 14 for more information.

CLUTCH SYSTEM SETTINGS



TECHNICAL INFORMATION

QUICK TROUBLESHOOTING GUIDE



CLUTCH SLIPPING

PROBABLE CAUSE	CORRECTION
No free pedal.	Re-adjust per instructions included with every IATCO NEW clutch assembly.
Release mechanism is binding.	Check entire release mechanism & linkage. Replace all worn or modified parts and lubricate if necessary.
Worn clutch facings.	Install a NEW clutch assembly.
Grease or oil on facings.	Install NEW disc(s) if organic friction material is used; find and repair cause of grease or oil contamination.
Weak pressure springs.	Install a NEW clutch assembly that is correctly specified for the vehicle.
Overload clutch.	Check to ensure that proper clutch has been specified.

NOISY CLUTCH

PROBABLE CAUSE	CORRECTION
Clutch release bearing dry or damaged.	Lubricate bearings with high temperature grease or install NEW clutch assembly.
Flywheel pilot bearing dry or damaged.	Replace flywheel pilot bearing.
Gear rattle present during engine idle.	Verify that the correct clutch was selected for the vehicle. Raise engine RPM to possibly eliminate noise.
Cross member of yoke / fork is contacting clutch cover.	Adjust the clutch. Check wear on cross shafts, bell housing bushings and release yoke / fork. Replace where necessary.
Rear disc (pressure plate side) rivets are interfering with retainer hub.	Adjust clutch properly so that release bearing travels a minimum of 1/2" and that a 1/8" gap is set between the fork tips and bearing pads with clutch pedal up.
Improper clearance between drive slots and drive lugs on intermediate plate.	Clearance should be no less than (.006").

POOR CLUTCH RELEASE

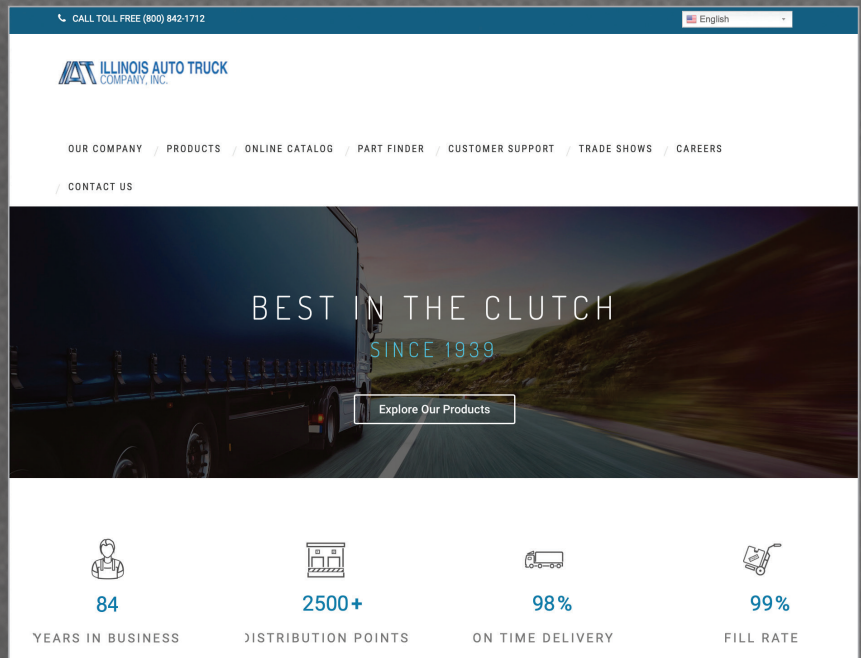
PROBABLE CAUSE	CORRECTION
Clutch adjustment not correct.	Recheck adjustment per instructions.
Disc(s) is/are installed backwards or the flywheel opening is too small for disc damper OD.	Check disc(s) labels & install per directions. Check existing flywheel opening ID vs. disc damper OD.
Damaged sleeve bushing.	Install a NEW clutch assembly or NEW cover assembly if applicable.
Damaged or bent disc assembly.	Replace disc(s) assembly.
Damaged clutch release bearing from lack of proper lubrication.	Install a NEW clutch assembly or NEW cover assembly if applicable.
Cross-shaft protruding through release yoke / fork clearance hole.	Realign cross-shaft so that it does not protrude.
Release yoke / fork cross piece is contacting clutch assembly at full release position.	Check linkage adjustment. Replace linkage or release yoke / fork.
Release yoke / fork not aligned properly with release bearing.	Check the flywheel. Most likely too much material has been removed from the flywheel.
Intermediate plate sticking on the drive lugs (14" Cast AS 2-plate assemblies only).	Check that the drive pins are 90 degrees square to the flywheel surface & that there is a min. (.006") clearance between the drive pins and the intermediate plate slots.
Pressure plate not retracting.	Verify the installation blocks were removed during installation and are not lodged in the cover during operation.
Worn Splines on the input shaft.	Replace input shaft.
Damaged clutch brake or release bearing not in contact with clutch brake.	Adjust clutch so that release bearing contacts clutch brake with pedal completely depressed. Replace damaged clutch brake.

Illinois Auto Truck Co., Inc.'s website is dedicated to the education of heavy duty clutch users and installers. We continually improve our site and its content in order to provide our customers with real-time information and technical references. Because Illinois Auto Truck Co., Inc. is a customer driven company, our website is designed to provide the tools and resources needed to keep you informed of the latest in clutch technology and customer service advancements.

From the online accessibility of product bulletins to updated specifications of new product offerings, our website is designed with the end-users' needs in mind. Technical bulletins are written and reviewed by our clutch experts with over 80 years of experience in the manufacture and application of heavy duty clutches and their components. These website features, as well as other elements, are constantly updated with the latest information.

Please visit www.iatcoinc.com and remember our goal is to make our site the **"Best in the Clutch"**.

We always welcome and encourage your feedback and suggestions.



VISIT US AT WWW.IATCOINC.COM



1669 Marshall Drive
Des Plaines, Illinois 60018-1840 USA

Phone: 1.847.299.1100
Toll-Free: 1.800.842.1712

Facsimile: 847.299.1205
Toll-Free Fax: 800.942.7660
Email: sales@iatcoinc.com

Website: www.iatcoinc.com
Online Catalog: catalog.iatco.com



**STRONGEST PACKAGING
IN THE INDUSTRY!**

For more information scan codes below



Website



Email



Facebook



Instagram

